



EASTERN SUBURBS  
FOOTBALL ASSOCIATION

Annual Report **2011**



## **EASTERN SUBURBS FOOTBALL ASSOCIATION NOTICE OF ANNUAL GENERAL MEETING**

Notice is hereby given that the Annual General Meeting of the Eastern Suburbs Football Association Incorporated will be held on **Monday, 28 November 2011** at the Coogee Diggers at 7.00pm.

### **NOTICE OF BUSINESS**

#### **ITEM 1. APOLOGIES**

#### **ITEM 2. CONFIRMATION**

Confirmation of Minutes of the Annual General Meeting of the Eastern Suburbs Football Association held on 29 November 2010.

#### **ITEM 3. REPORT**

To receive reports from the Board of Directors and adopt the 2011 Annual Report.

#### **ITEM 4. ACCOUNTS**

To receive and consider the balance sheet, income and expenditure accounts and the report of the auditors for the year ending 30 September 2011.

#### **ITEM 5. ELECTIONS**

In accordance with the constitution of the Eastern Suburbs Football Association:-

- a) Election of Life Members [If any]
- b) Elect Board of Directors

#### **ITEM 6. MOTIONS**

Consideration of any motion of which due notice has been given

#### **ITEM 7. CLOSE OF MEETING**



**Aaron Dibdin**  
General Manager  
Monday 31 October 2011

## TABLE OF CONTENTS

<b>04</b>	2011 Office Bearers
<b>04</b>	Life Members
<b>04</b>	Hall of Fame
<b>05</b>	Presidents Report
<b>06</b>	General Manager Report
<b>08</b>	Report from Director of Finance incl. Audited Account
<hr/>	
<b>22</b>	Director of Technical Development
<b>23</b>	Men's League Report
<b>23</b>	Women's League Report
<b>24</b>	Junior League Report
<b>25</b>	Girls League Report
<b>25</b>	SSG Report
<b>26</b>	Director of Corporate Affairs
<b>27</b>	ESFA Referees Branch Chairman Report
<b>28</b>	ESFA Referees Coordinator Report
<b>29</b>	Metro League Report
<b>30</b>	Eastern UNSW Lions Report
<b>31</b>	Judiciary Committee Report
<b>32</b>	Communications Report
<b>32</b>	Sponsorship Report
<b>33</b>	White Knights Report
<b>34</b>	Association Survey/Statistics
<b>35</b>	Competition Statistics
<b>36</b>	League Tables
<b>54</b>	Partners/Special Thanks



The No.1 community participation sport in Australia, in the most lucrative socio demographic in Sydney.

## 2011 OFFICE BEARERS

<b>President</b>	Peter Hennessy (2010 AGM to 24/9/11)
<b>President</b>	Peter Kriesler (24/9/11 to present)
<b>Vice President</b>	Peter Kriesler (to 24/9/11)
<b>Director Corporate Affairs</b>	Michelle Bogatyrov
<b>Director Football</b>	Vacant
<b>Director Finance</b>	Emmanuel Alfieris
<b>Director of Technical Development &amp; Modified Football</b>	Andrew Field
<b>Director, Publicity</b>	François Romanet
<b>Director, Special Projects</b>	Jon Wightwick

### ESFA STAFF

General Manager	Aaron Dibdin
Competitions Manager	Adam Giles ..... to September 2011
Referees Coordinator	Ben Abraham
Communications Officer	Gregory Calacouris
Administration Officer	Ann Lonergan
Accounts Officer	Jo Curry
Technical Director	Luke Andrews ..... to October 2011
	Sally Patterson ..... from October 2011
Coaching & Development Officer	Louis Chaperon ..... from October 2011

### Football Management Committee

Men's League Chair	Wally Holzer
Women's League Chair	Julia Chernoukha
Junior League Chair	Frank Friedmann
Girl's League Chair	David Owens
Small Sided Football Chair	Andrew Field

### Referees Standing Committee

Paul Matthews (Chair)	George Magoulias, Louise Mazzaroli, Gregory Calacouris Alex Imvriotis, Ned Sparkes
-----------------------	---

### Life Members

Ernie Small \*  
 Bill Vrolyks OAM  
 Ted Simmons OAM  
 Paul Mavromatis  
 Wally Holzer  
 John Velthuys  
 Joe Zammit  
 Sean Fenton  
 David Lewis  
 Alan Chow  
 \* Deceased

### Hall of Fame

Andrew Field (player/  
 administration/coach)  
 John Reid (administration/coach)  
 Pam Chow (administration)  
 Mick Vasin (player/administration)  
 John Nesbit (administration)  
 Charlie Davidson (coach)  
 Jim Zammitt (administration)  
 Tony Pengue (administration)  
 Peter Grunfeld (administration)  
 Michael Lazaridis (administration)  
 George Lundy (coaching/  
 administration)  
 Ron Hoenig (administration)

Simon Phillips (administration)  
 Con Pavlou (administration)  
 Frank Friedman (administration)  
 Louise Mazzaroli (women's  
 football and refereeing)

### Special Service Awards

Wally Holzer  
 Mark Fragias  
 Michelle Bogatyrov  
 David Lewis  
 Roger Engel  
 Ian Tischman  
 Ron Hoenig  
 George Lundy



## PRESIDENT'S REPORT 2011

In terms of the ancient Chinese curse, football in NSW and in the Eastern Suburbs has been going through interesting times.

In the Eastern Suburbs, we are in the process of reviewing aspects of our constitution that, hopefully will lead to a more enjoyable football experience for all participants. The process is not without some upheaval, and we have been through a difficult period. Hopefully, we are now moving in the right direction, with the whole football community working positively together.

I came into the position of President of ESFA only recently, and I think that it is important to thank my predecessor, Peter Hennessey, for all his contributions to football in our area. Peter has been responsible for some of the major changes that have helped modernise many aspects of local football.

**Peter Kriesler**  
President



## GENERAL MANAGER'S REPORT

It is my pleasure to report to the Association after my first full year as General Manager. It has been a long and hard year, but we come to the end of 2011 looking forward to a bright future and with a commonality of purpose that has been missing for some years.

This season has seen some tremendous highlights. Nearly 7,000 players played the game with ESFA clubs this year, a participation level that ensures we are still a giant in the Eastern Suburbs. We have recruited yet more referees and our coverage is still above 80%.

We have attracted sponsorships valued at over \$30,000 - a terrific result. Our website, e-newsletter and engagement with social media mean that ESFA is more accessible to our participants than ever before. We have begun directly engaging with schools to encourage local kids to come and play the game.

Our accessible football program, the ESFA White Knights, has completed their second year and the program goes from strength to strength. I'd like to thank Taleah Neowhouse who still serves as the coordinator for White Knights for all of her volunteer hours.

In the Football NSW Metropolitan Representative League, both ESFA sides performed well, with the boys developing their football and playing a good style in the regulation 1-4-3-3. The Under 11s started like a flash and came home with the Northern Conference League Championship, and were unfortunate not to make it to the Grand Final. In the Under 12s, much of the side that did the double in the 11s last year returned and swept the Centenary Cup, the Northern Conference League Championship and squeaked home in a nail biting penalty shootout against a terrific Sutherland team.

The Eastern UNSW Lions had a sensational second year in the Football NSW Women's Super League, where three teams made the finals and performed very creditably. In just our second year, this is a great achievement.

At finals time, with our Major Partners, Jazzright, we ran grand final days that we hope is a little taste of things to come in the future. We were very pleased to be able to offer a festival of football to our junior grand finalists and we hope to build on the finals experience for the 2012 season, and showcase the pinnacle of football in the Eastern Suburbs to build the profile and interest in our sport.

It has been another season of change. We have seen the departure of our Competitions Manager, Adam Giles. Adam has been fortunate enough to be selected to undertake a FIFA Master course in Management, Law and Humanities of Sport. We thank Adam for his work as Referees' Manager and then Competitions Manager and I am sure you will all join with me to wish him all the best.

Later in the year we also bade farewell to our President, Peter Hennessy, who stepped down after four years in the role. Peter's passion and dedication for the game are clear for all to see.

During Peter's tenure, the Association established the ESFA Referees Branch, the first in-house referees association in NSW and a model that other associations are starting to adopt. The work he has done to drive the Association forward in communications and branding are obvious. Peter's vision for the Premier League has raised our top men's competition to a new level, and it is largely thanks to his work that we ran a terrific Premier League Presentation Dinner this year where we awarded the inaugural Ted Simmons Medal to Simon Matthews of Phoenix FC. Nobody can deny the contribution he has made to football in the Eastern Suburbs.

I'd like the Association as one to join me in thanking Peter for his years of service and recognise his achievements.

Through the latter part of the year discussions around reshaping the Association for the future took shape, and Members will be asked to vote on proposals to amend the constitution to introduce a form of proportional representation and to re-tune our councils, football management committees and All Clubs Meetings.

Thanks go to our Directors this year, Peter Hennessy, Peter Kriesler, Michelle Bogatyrov, Emmanuel Alfieris, François Romanet, Jon Wightwick and Andrew Field. Jon and François will not be continuing after the Annual General Meeting and I would like to thank them for their work on the Board and their advice and input.

Thanks also go to our sponsors and partners, Jazzright Production Services, Link Market Services, AllConnect Telecommunications, TeamSports Australia who supplied us with Nike matchballs this year, FourFourTwo Australia, LoveFootball and Lucas Meats.

In 2012, with a refreshed Board and a spirit of camaraderie and cooperation we look forward to training our eyes firmly on the running of football competition and making it run as well and as smoothly as possible. It is in the interests of our clubs and all of their players, families and volunteers that ESFA runs the best possible football competition. We look forward to all of our clubs rallying together to make football 2012 the best season yet.

**Aaron Dibdin**  
General Manager

---

# FINANCIAL REPORT

FOR THE YEAR ENDED 30 SEPTEMBER 2011

---

## 2011 FINANCE DIRECTOR'S REPORT

Financially, the 2011 season was focussed on consolidating the efforts that began with a review of ESFA's financial position in mid 2010. It is pleasing to advise the membership that this season we implemented the first phase of our strategy to create a less costly infrastructure for ESFA. This was not a cost reduction exercise in isolation. Our aim was to maintain, and where possible, improve the quality of competition management, refereeing and coaching. This strategy will continue in 2012 as there is still more to do to enhance ESFA's financial sustainability.

The key financial highlights for the 2011 season include:

- Reduction in ESFA's operating costs by 10.7% (excluding passthrough for FNSW affiliation fees) compared to 2010. This was achieved largely due to 15% reduction in staff costs
- Reduction in ESFA's incoming cash by 6.3% (excluding FNSW passthrough) compared to 2010, mostly due to reduction of incoming referee fees
- Significant increase in Sponsorship income from \$5K in 2010 to \$22K in 2011. In addition to this cash benefit, there was an "in-kind" sponsorship benefit that has resulted in reduced expenditure of approximately \$5K. This represents a record year for Sponsorships with total value of \$27K compared to the previous best over the last five years of \$8K in 2009
- The "dividend" of our financial efforts was the ability to upgrade the Grand Final venue for some divisions to Hensley Athletic Field (the premier venue in the Eastern Suburbs)

- Expansion of our Coaching Programme to include a development officer within the existing budget parameters
- Restructuring the budgeting process by aligning our planning with our accounting package system reports. This will result in better tracking to budget and less management time spent on compiling financial reports

In my first season (2010) as Finance Director our initial efforts were focussed on creating the financial governance framework for ESFA. By mid 2010, our efforts then focussed on creating a sustainable cost structure for ESFA that would also support our strategic objectives. We undertook immediate significant corrective action to address ESFA's cost infrastructure. The implementation of that strategy continued throughout 2011. Our aim is to continue this strategy in 2012. Given that this is an often less visible part of our operations, it is worth noting the significant effort undertaken over the last 16 months.

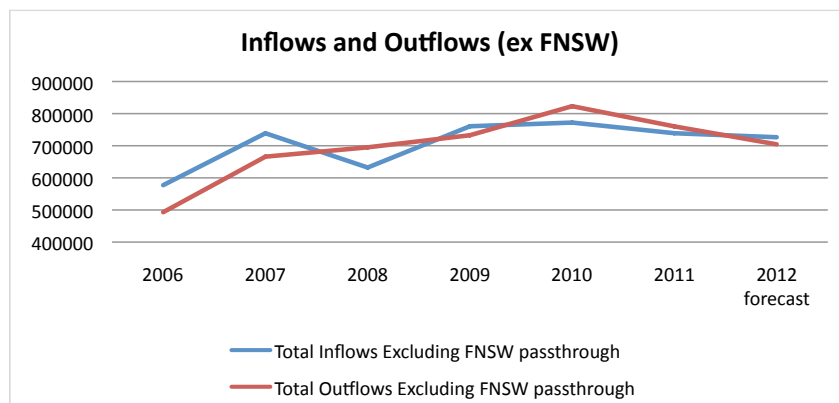
### EFFORTS TO REDUCE ESFA COST INFRASTRUCTURE

Overall, ESFA's incoming cash was \$1.117m down from \$1.138m (\$21K less than 2010 - down 1.9%) and our outgoing cash was \$1.128m compared to \$1.189m in 2010 (\$61K less than 2010 - down 5.1%).

However, the true measure of ESFA's efforts are better reflected when we remove the Football NSW (FNSW) affiliation fees (\$0.392m in 2011). These fees are essentially a passthrough that ESFA collects and forwards to FNSW. The table below demonstrates our efforts in 2011 to reduce ESFA's costs. We arrested increasing costs in 2010 and in 2011 we reduced our costs by 10.7%, much more than the 6.3% decrease in cash inflows. The table also demonstrates our plan to continue this approach in 2012 (the 2012 forecast is based on the draft budget to be approved at the AGM).

<b>Cash Change by Season Excluding FNSW passthrough</b>	<b>2006</b>	<b>2007</b>	<b>2008</b>	<b>2009</b>	<b>2010</b>	<b>2011</b>	<b>2012 forecast</b>
Registration Fees Excluding FNSW passthrough	\$354,118.98	\$420,148.69	\$413,768.99	\$492,318.36	\$512,498.19	\$526,632.54	\$486,835.38
Total Inflows Excluding FNSW passthrough	\$577,207.89	\$738,922.10	\$632,120.70	\$760,599.21	\$772,104.09	\$738,951.79	\$726,447.82
Total Outflows Excluding FNSW passthrough	\$493,042.54	\$665,963.77	\$695,012.08	\$732,679.86	\$823,126.41	\$760,182.94	\$704,381.66
<b>Cash Change by Season Excluding FNSW passthrough</b>	<b>2006</b>	<b>2007</b>	<b>2008</b>	<b>2009</b>	<b>2010</b>	<b>2011</b>	<b>2012 forecast</b>
Change in Cash Inflows from Prior Year ex FNSW	\$161,714.21	\$172,921.23	-\$106,801.40	\$128,478.51	\$11,504.88	-\$33,152.30	-\$12,503.97
Change in Cash Outflows from Prior Year ex FNSW	\$172,921.23	\$29,048.31	\$37,667.78	\$90,446.55	\$90,446.55	-\$62,943.47	-\$55,801.28
Percentage Change in Inflows from Prior Year ex FNSW	28.0%	28.0%	-14.5%	20.3%	1.5%	-4.3%	-1.7%
Percentage Change in Outflows from Prior Year ex FNSW	35.1%	35.1%	4.4%	5.4%	12.3%	-7.6%	-7.3%
<b>Cash Change by Season from peak</b>	<b>2006</b>	<b>2007</b>	<b>2008</b>	<b>2009</b>	<b>2010</b>	<b>2011</b>	<b>2012 forecast</b>
Change Inflows From Peak (2010) ex FNSW						-\$33,152.30	-\$45,656.27
Change Outflows from Peak (2010) ex FNSW						-\$62,943.47	-\$118,744.75
Percentage Change Inflows from Peak (2010) ex FNSW						-4.3%	-5.9%
Percentage Change Outflows from Peak (2010) ex FNSW						-7.6%	-14.4%





When we presented the 2011 budget our stated aim was to keep the contribution from the clubs as low as possible and increase income from other sources. This was achieved.

The diagram below demonstrates that we have delivered a cost infrastructure for ESFA to below 2009 levels and our aim for 2012 is to deliver 2007 cost levels. Similarly, in terms of cash inflows, our aim is to keep player fees flat for 2012 and in conjunction with a conservative estimate of lower player numbers we are planning for lower incoming cash.

The 2011 achievements would not have been possible without the great diligence and cooperation of our staff. Their efforts on both the costs and sponsorships provided the financial flexibility to invest in hosting Grand Finals at Hensley Athletic Field and also to continue to invest in expanding the quality and reach of our coaching programme.

## SUMMARY

ESFA is developing a more sustainable financial platform. This is due to the implementation of the Financial Governance policies, the development of a leaner cost strategy in 2010 and the first phase implementation of this strategy in 2011. Long term financial sustainability is essential to:

- Continue to improve the quality of ESFA's coaching, refereeing and competition outcomes
- Make football participation financially accessible for children and adults in the Eastern Suburbs, and
- Deliver on our strategic objectives to improve and expand football facilities in the Eastern Suburbs

There were many financial achievements in 2011. Nonetheless there is still more to do, particularly with regard to addressing more of our costs and developing an approach to fund more investment in significant initiatives, such as grounds development.

Notwithstanding the fact that there is more to do and that I am only one year into my two year Board term, I will be resigning my Board position at the AGM this year. I think it is appropriate that I put my position at the discretion of the membership, given the recent board changes and the development of proposed constitutional changes.

Yours in Football,

**Emmanuel Alfieris**  
ESFA Finance Director

Our aim was to maintain, and where possible, improve the quality of competition management, refereeing and coaching.

**Eastern Suburbs Football Association Inc.  
Committees' Report**

Your committee members submit the financial report of the Eastern Suburbs Football Association Inc. for the financial year ended 30 September 2011

**Committee Members**

The names of committee members throughout the year and at the date of the report are;

**Current Members**

Peter	Kriesler	President
Emmanuel	Alfieris	Director of Finance
Michelle	Bogatyrov	Director, Corporate Affairs
Jonathan	Wightwick	Director
François	Romanet	Director

**Former Members**

Peter	Hennessy
Raff	Del Vecchio
Andrew	Field
Rick	Flowers

**Principal Activities**

The principal continuing activities of the association in the course of the financial year were the fostering and control of the game of association football within the boundaries of the Eastern Suburbs as determined by Football NSW.

**Operating Result**

The operating (deficit) for the year was :                   \$ (34,435.73)

**Significant Changes**

No significant change in the nature of these activities occurred during the year.

**Dividends**

The Constitution, Articles & By-Laws of the association prohibit the payment of dividends, accordingly no dividends have been provided for or paid during the financial year.

**After Balance Date Events**

No matters or circumstances have arisen since the end of the financial year which significantly affected or may significantly affect the operations of the Association the results of those operations, or the state of affairs of the Association in future financial years.

**Likely Developments and Results**

There are no known likely developments, other than referred to in this report, that would have a material impact on the association or its operations.

**Indemnifying Officers or Auditor**

No indemnities have been given or insurance premiums paid, during or since the end of the financial year, for any person who is or has been an officer or auditor of the entity, other than as set out below.

During or since the financial year the Association has paid premiums to insure all committee members against liabilities for costs incurred by them in defending any legal proceedings arising out of their conduct while acting in the capacity of committee member of the Association other than involving conduct involving a wilful breach of duty in relation to the Association.

Signed in accordance with a resolution of the Members of the Committee.



Peter Kriesler  
President



Emmanuel Alfieris  
Director of Finance

Signed at Sydney this 14th Day of November 2011

**Eastern Suburbs Football Association Inc.**  
**Income and Expenditure Statement for the year ended 30 September 2011**

	Note	Sept 2011 \$	Sept 2010 \$
<b>Income</b>			
Administrative Income		8,888.98	15,519.64
Clinics & Academies		18,283.65	10,180.57
Equipment Sales		5,490.00	41,812.35
Ground Hire		8,693.00	12,055.47
Interest Received		1,846.59	4,069.16
Referee Income		146,872.03	170,968.71
Sponsorships		22,245.00	5,000.00
Team Fees		918,618.96	878,443.90
		<u>1,130,938.21</u>	<u>1,138,049.80</u>
<b>Expenditure</b>			
Administration Expenses		(2,635.49)	(9,442.37)
Advertising & Promotion		(4,200.46)	(12,233.30)
Affiliation Fees		(391,986.42)	(365,945.71)
Amortisation & Depreciation		(13,204.58)	(10,055.84)
Audit Fees		(10,000.00)	(10,000.00)
Awards & Prize Money		(29,162.08)	(34,510.20)
Bad Debts		-	-
Clinics, Academies & Coaching Fees		(24,217.46)	(27,682.27)
Competition Entry Fees		(400.00)	(3,524.00)
Doubtful Debts Provision		-	-
Employment Expenses		(270,786.31)	(307,085.64)
Functions & Meetings Costs		(8,902.39)	(4,574.09)
Ground Hire, Maintenance & Grand Final Costs		(108,077.07)	(77,249.85)
Insurances		(2,405.49)	(3,285.30)
Interest Paid		(2,865.02)	(591.82)
Legal Fees Paid		-	-
Player Equipment		(26,114.85)	(62,257.35)
Postage, Printing & Stationery		(20,916.02)	(17,318.93)
Referee Expenses		(156,690.64)	(189,535.37)
Rental Expense		(48,390.02)	(38,119.82)
Telephone, Communications & Licence Fees		(26,148.39)	(25,716.10)
		<u>(1,147,102.69)</u>	<u>(1,199,127.96)</u>
Profit/(Deficit) before abnormal items		<u>(16,164.48)</u>	<u>(61,078.16)</u>
<b>Abnormal Items</b>			
Prior Year Expenditures	Rental Expense	(4,651.10)	-
	Ground Hire	(13,620.15)	-
		<u>(18,271.25)</u>	<u>-</u>
Profit/(Deficit) before income tax expense		(34,435.73)	(61,078.16)
Income tax expense	1	-	-
Profit/(Deficit) after income tax		<u>(34,435.73)</u>	<u>(61,078.16)</u>
Accumulated Surplus brought forward		36,674.92	97,753.08
Accumulated Surplus carried forward		<u>2,239.19</u>	<u>36,674.92</u>

The accompanying notes form part of this financial report

**Eastern Suburbs Football Association Inc.**  
**Assets and Liabilities Statement as at 30 September 2011**

	Note	Sept 2011 \$	Sept 2010 \$
<b>Current Assets</b>			
Cash and Cash Equivalents	2	150,374.18	39,257.59
Trade and Other Receivables	3	114,563.10	69,107.37
Inventories	4	10,326.45	5,727.14
<b>Total Current Assets</b>		<u>275,263.73</u>	<u>114,092.10</u>
<b>Non-current Assets</b>			
Property, Plant & Equipment	5	24,423.05	21,762.63
<b>Total Non-current Assets</b>		<u>24,423.05</u>	<u>21,762.63</u>
<b>Total Assets</b>		299,686.78	135,854.73
<b>Current Liabilities</b>			
Trade and Other Payables	6	267,347.13	75,077.50
Provisions	7	11,600.46	5,602.31
<b>Total Current Liabilities</b>		<u>278,947.59</u>	<u>80,679.81</u>
<b>Non Current Liabilities</b>			
Provisions	8	18,500.00	18,500.00
<b>Total Non-current Liabilities</b>		<u>18,500.00</u>	<u>18,500.00</u>
<b>Total Liabilities</b>		297,447.59	99,179.81
<b>Net Assets</b>		<u>2,239.19</u>	<u>36,674.92</u>
<b>Members' Funds</b>			
Accumulated Surplus		2,239.19	36,674.92
<b>Total Members' Funds</b>		<u>2,239.19</u>	<u>36,674.92</u>

The accompanying notes form part of this financial report



**Eastern Suburbs Football Association Inc.**  
**Statement of Cash Flows for the year ended 30 September 2011**

	Note	Sept 2011 \$	Sept 2010 \$
<b>Cash Flow from Operating Activities</b>			
Receipts from customers		1,193,711.63	1,240,990.57
Payments to suppliers and employees		(1,065,711.61)	(1,300,735.36)
Interest received		1,846.59	4,069.16
Interest Paid		(2,865.02)	-
Net cash provided by/(used in) operating activities	9(b)	<u>126,981.59</u>	<u>(55,675.63)</u>
<b>Cash Flow from Investing Activities</b>			
Payments for property, plant & equipment		(15,865.00)	(17,875.04)
Net cash provided by/(used in) investing activities		<u>(15,865.00)</u>	<u>(17,875.04)</u>
<b>Cash Flows from Financing Activities</b>			
Club bonds received		-	-
Net cash provided by/(used in) financing activities		<u>-</u>	<u>-</u>
<b>Net (decrease)/increase in cash held</b>		111,116.59	(73,550.67)
Cash at beginning of year		39,267.59	112,818.26
<b>Cash at end of year</b>	9(a)	<u><u>150,384.18</u></u>	<u><u>39,267.59</u></u>

The accompanying notes form part of this financial report

**Eastern Suburbs Football Association Inc.**  
**Notes to the financial statements**  
**for the year ended 30 September 2011**

**Note 1: Statement of Accounting Policies**

This financial report is a special purpose financial report prepared in order to satisfy the financial reporting requirements of the Associations Incorporation Act New South Wales. The committee has determined that the association is not a reporting entity.

The financial report has been prepared on an accruals basis and is based on historic costs and does not take into account changing money values or, except where specifically stated, current valuations of non-current assets.

The following significant accounting policies, which are consistent with the previous period unless otherwise stated, have been adopted in the preparation of this financial report.

**a) Income Tax**

No provision for income tax has been raised as the entity is exempt from income tax under Section 50-45 of the Income Tax Assessment Act 1997.

**b) Inventories**

Inventories are measured at the lower of cost and net realisable value.

**c) Property, Plant and Equipment (PPE)**

Leasehold improvements and office equipment are carried at cost less, where applicable, any accumulated depreciation.

The depreciable amount of all PPE is depreciated over the useful lives of the assets to the association commencing from the time the asset is held ready for use.

Leasehold improvements are amortised over the shorter of either the unexpired period of the lease or the estimated useful lives of the improvements.

**d) Impairment of Assets**

At each reporting date, the entity reviews the carrying values of its tangible and intangible assets to determine whether there is any indication that those assets have been impaired. If such an indication exists, the recoverable amount of the asset, being the higher of the asset's fair value less costs to sell and value in use, is compared to the asset's carrying value. Any excess of the asset's carrying value over its recoverable amount is expensed to the income statement.

**e) Employee Benefits**

Provision is made for the association's liability for employee benefits arising from services rendered by employees to balance date. Employee benefits have been measured at the amounts expected to be paid when the liability is settled.

**f) Provisions**

Provisions are recognised when the association has a legal or constructive obligation, as a result of past events, for which it is probable that an outflow of economic benefits will result and that outflow can be reliably measured. Provisions are measured at the best estimate of the amounts required to settle the obligation at the end of the reporting period.

**g) Cash and Cash Equivalents**

Cash and cash equivalents include cash on hand, deposits held at-call with banks, other short-term highly liquid investments with original maturities of three months or less.

**Eastern Suburbs Football Association Inc.**  
**Notes to the financial statements**  
**for the year ended 30 September 2011**

**1 Statement of Accounting Policies (continued)**

**h) Revenue and Other Income**

Revenue is measured at the fair value of the consideration received or receivable after taking into account any trade discounts and volume rebates allowed. For this purpose, deferred consideration is not discounted to present values when recognising revenue.

Interest revenue is recognised using the effective interest rate method, which for floating rate financial assets is the rate inherent in the instrument. Dividend revenue is recognised when the right to receive a dividend has been established.

Grant and donation income is recognised when the entity obtains control over the funds, which is generally at the time of receipt.

All revenue is stated net of the amount of goods and services tax (GST).

**i) Leases**

Leases of PPE, where substantially all the risks and benefits incidental to the ownership of the asset, but not the legal ownership, are transferred to the association, are classified as finance leases.

Finance leases are capitalised by recording an asset and a liability at the lower of the amounts equal to the fair value of the leased property or the present value of the minimum lease payments. Including any guaranteed residual values. Lease payments are allocated between the reduction of the lease liability and the lease interest expense for that period.

Leased assets are depreciated on a straight-line basis over the shorter of their estimated useful lives or the lease term.

Lease payments for operating leases, where substantially all the risks and benefits remain with the lessor, are charged as expenses in the periods in which they are incurred.

**j) Goods and Services Tax**

Revenues, expenses and assets are recognised net of the amount of GST, except where the amount of GST incurred is not recoverable from the Australian Taxation Office (ATO). Receivables and payables are stated inclusive of the amount of GST receivable or payable. The net amount of GST recoverable from, or payable to, the ATO is included with other receivables or payables in the statement of financial position.

Cash flows are presented in the cash flow statement on a gross basis, except for the GST component of investing and financing activities, which are disclosed as operating cash flows.

**k) Comparative Figures**

When required by Accounting Standards, comparative figures have been adjusted to conform to changes in presentation for the current financial year.

**Eastern Suburbs Football Association Inc.**  
**Notes to the financial statements**  
**for the year ended 30 September 2011**

	Note	Sept 2011 \$	Sept 2010 \$
<b>Note 2: Current Assets</b>			
<b>- Cash &amp; Cash Equivalents</b>			
Cash on Hand		510.00	510.00
Cash at Bank - CBA		61,969.90	8,368.23
Interest Bearing Deposit - CBA		84,348.98	30,379.36
Cash at Bank - PayPal		3,545.30	-
		<u>150,374.18</u>	<u>39,257.59</u>
<b>Note 3: Current Assets</b>			
<b>-Trade and Other Receivables</b>			
Trade Receivables		107,212.63	62,322.28
Provision for Doubtful Debts		(5,000.00)	(5,000.00)
Other Receivables		-	1,934.62
Deposits Paid		12,350.47	9,850.47
		<u>114,563.10</u>	<u>69,107.37</u>
<b>Note 4: Current Assets</b>			
<b>-Inventories</b>			
Goods Held for Re-Sale		<u>10,326.45</u>	<u>5,727.14</u>
		<u>10,326.45</u>	<u>5,727.14</u>
<b>Note 5: Non-current Assets</b>			
<b>- Property, Plant and Equipment</b>			
Office Equipment		48,913.43	48,913.43
Accumulated Depreciation		<u>(44,399.99)</u>	<u>(31,466.62)</u>
		<u>4,513.44</u>	<u>17,446.81</u>
Equipment- at cost		2,850.00	2,850.00
Accumulated Depreciation		<u>(2,850.00)</u>	<u>(2,850.00)</u>
		-	-
Memorabilia		21,289.09	5,424.09
Accumulated Depreciation		<u>(1,379.48)</u>	<u>(1,108.27)</u>
		<u>19,909.61</u>	<u>4,315.82</u>
		<u>24,423.05</u>	<u>21,762.63</u>
<b>Note 6: Current Liabilities</b>			
<b>- Trade and Other Payables</b>			
Trade Creditors		207,708.88	16,897.75
Sundry Creditors and Accrued Expenses		34,247.66	31,597.64
GST Payables		11,388.16	18,289.03
Employee Accruals		14,002.43	8,293.08
		<u>267,347.13</u>	<u>75,077.50</u>
<b>Note 7: Current Liabilities</b>			
<b>- Provisions</b>			
Employee Benefits		11,600.46	5,602.31
		<u>11,600.46</u>	<u>5,602.31</u>



**Eastern Suburbs Football Association Inc.**  
**Notes to the financial statements**  
**for the year ended 30 September 2011**

	Note	Sept 2011 \$	Sept 2010 \$
<b>Note 8: Non Current Liabilities</b>			
<b>- Provisions &amp; Deferred Revenues</b>			
Provision for Member Bonds		18,500.00	18,500.00
		<u>18,500.00</u>	<u>18,500.00</u>
<b>Note 9: Cash Flow Information</b>			
<b>a) Reconciliation of Cash</b>			
Cash at the end of the financial year as shown in the statements of cash flows is reconciled to the related items in the balance sheet as follows:			
Cash on Hand		510.00	510.00
Cash at Bank - CBA		61,969.90	8,368.23
Interest Bearing Deposit - CBA		84,348.98	30,379.36
Cash at Bank - PayPal		3,545.30	-
		<u>150,374.18</u>	<u>39,257.59</u>
<b>b) Reconciliation of Cash Flow from Operations with Operating Profit after Income Tax</b>			
Operating (Deficit)/Surplus after Income Tax		(34,435.73)	(61,078.16)
Non-cash flows in operating profit			
Depreciation		13,204.58	10,055.84
Doubtful debts		-	-
Provision for annual leave		5,998.15	(147.69)
Changes in assets & liabilities			
(Increase)/Decrease in receivables		(45,455.73)	(6,763.50)
(Increase)/Decrease in inventories		(4,599.31)	2,669.50
Increase/(Decrease) in sundry creditors and accrued expenses		192,269.63	(411.62)
Increase/(Decrease) in deferred revenues		-	-
Cash Flow from Operating Activities		<u>126,981.59</u>	<u>(55,675.63)</u>
<b>Note 10: Capital &amp; Leasing Commitments</b>			
<b>Operating Lease Commitments</b>			
Non-cancellable operating leases contracted for but not			
Being rent of office			
Payable - minimum lease payments			
- not later than 12 months		15,127.84	44,843.25
- later than 12 months but not later than 5 years		-	15,127.84
- greater than 5 years		-	-
		<u>15,127.84</u>	<u>59,971.09</u>

The property lease is a non-cancellable lease with a three-year term from 1 January 2009, with rent payable monthly in advance. Contingent rental provisions within the lease agreement require that the minimum lease payments shall be increased by 5% per annum. An option exists to renew the lease at the end of the three-year term for an additional term of three years.

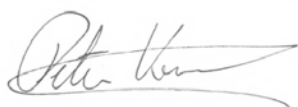
**Eastern Suburbs Football Association Inc.  
Statement by Members of the Committee**

The committee has determined that the association is not a reporting entity and that this special purpose financial report should be prepared in accordance with the accounting policies outlined in Note 1 to the financial statements.

In the opinion of the committee the financial report:-

1. Presents a true and fair view of the financial position of Eastern Suburbs Football Association Inc. as at 30 September 2011 and its performance for the year ended on that date.
2. At the date of this statement, there are reasonable grounds to believe that Eastern Suburbs Football Association Inc. will be able to pay its debts as and when they fall due.

This statement is made in accordance with a resolution of the Committee and is signed for and on behalf of the Executive Committee by:



Peter Kriesler  
President



Emmanuel Alfieris  
Director of Finance

Signed at Sydney this 14th Day of November 2011

# Rohan McCoy B.Bus CA FIPA

Accounting, Audit, Taxation & Business Advisory Services  
ABN 55 745 778 871

42 Bonds Rd  
Peakhurst NSW 2210  
PO Box 399  
Petersham NSW 2049  
Tel (02) 9596 1713  
Fax (02) 9596 1714  
Mobile 0412 979 969

[the.auditor@optusnet.com.au](mailto:the.auditor@optusnet.com.au)

## INDEPENDENT AUDIT REPORT TO THE MEMBERS OF EASTERN SUBURBS FOOTBALL ASSOCIATION INC.

### Report on the Financial Report

I have audited the accompanying financial report, being a special purpose financial report, of Eastern Suburbs Football Association Inc. (the association), which comprises the Assets and Liabilities Statement as at 30 September 2011, the Income and Expenditure Statement and Statement of Cash Flows for the year ended 30 September 2011, a summary of significant accounting policies, other explanatory notes and the statement by members of the committee.

### *Committee's Responsibility for the Financial Report*

The committee of the association is responsible for the preparation and fair presentation of the financial report and have determined that the accounting policies described in Note 1 to the financial statements, which form part of the financial report, are consistent with the financial reporting requirements of the Associations Incorporation Act (NSW) 2009 and are appropriate to meet the needs of the members. The committee's responsibilities also include designing, implementing and maintaining internal control relevant to the preparation and fair presentation of the financial report that is free from material misstatement, whether due to fraud or error; selecting and applying appropriate accounting policies; and making accounting estimates that are reasonable in the circumstances.

### *Auditor's Responsibility*

My responsibility is to express an opinion on the financial report based on my audit. No opinion is expressed as to whether the accounting policies used, as described in Note 1, are appropriate to meet the needs of the members. I have conducted My audit in accordance with Australian Auditing Standards. These Auditing Standards require that I comply with relevant ethical requirements relating to audit engagements and plan and perform the audit to obtain reasonable assurance whether the financial report is free from material misstatement

An audit involves performing procedures to obtain audit evidence about the amounts and disclosures in the financial report. The procedures selected depend on the auditor's judgment, including the assessment of the risks of material misstatement of the financial report, whether due to fraud or error. In making those risk assessments, the auditor considers internal control relevant to the entity's preparation and fair presentation of the financial report in order to design audit procedures that are appropriate in the circumstances, but not for the purpose of expressing an opinion on the effectiveness of the entity's internal control. An audit also includes evaluating the appropriateness of accounting policies used and the reasonableness of accounting estimates made by the committee, as well as evaluating the overall presentation of the financial report.

I believe that the audit evidence I have obtained is sufficient and appropriate to provide a basis for my audit opinion.

### *Independence*

In conducting My audit, I have complied with the independence requirements of Australian professional ethical pronouncements.

*Auditor's Opinion*

In my opinion, the financial report of Eastern Suburbs Football Association Inc. presents fairly, in all material respects the financial position of Eastern Suburbs Football Association Inc. as of 30 September 2011 and of its financial performance for the year then ended in accordance with the accounting policies described in Note 1 to the financial statements and the Associations Incorporations Act (NSW) 2009.

*Basis of Accounting and Restriction on Distribution*

Without modifying my opinion, I draw attention to Note 1 to the financial report, which describes the basis of accounting. The financial report has been prepared to assist the Eastern Suburbs Football Association Inc. to meet the requirements of Associations Incorporations Act (NSW) 2009. As a result, the financial report may not be suitable for another purpose.



Registered Company Auditor

Dated this 14<sup>th</sup> day of November 2011



INSTITUTE OF PUBLIC  
ACCOUNTANTS

*Liability limited by a scheme approved under Professional Standards Legislation*



**CERTIFICATE BY MEMBERS OF THE COMMITTEE**

I, Peter Kriesler of 2 Higgs St Randwick NSW 2031, and I, Emmanuel Alfieris of 1/70 Campsie St, Campsie NSW 2194, certify that:

- a. We are members of the committee of Eastern Suburbs Football Association Inc.
- b. We attended the annual general meeting of the association held on 28 November 2011.
- c. We are authorised by the attached resolution of the committee to sign this certificate.
- d. This annual statement was submitted to the members of the association at its annual general

Signed at Sydney this 14th Day of November 2011



Peter Kriesler  
Committee Member



Emmanuel Alfieris  
Director of Finance

## DIRECTOR OF TECHNICAL DEVELOPMENT AND MODIFIED FOOTBALL

At the end of the 2010 football year, ESFA appointed a new Technical Director, Luke Andrews, and meetings were held between the TD, the writer and the General Manager to plan the 2011 season coaching activities. An ambitious program of FFA and FNSW accredited courses, development programs, club visits and holiday programs was planned and dates set.

The development program aimed at adding an extra source of coaching for the stronger players in each of the SSF age groups. The program for U8s, U9s, U10s and U11s was run for some ten weeks in May, June and July, but was somewhat disrupted by the unfortunately wet season and lit ground availability. Some 20 players in each age group took part under the coaching of Louis Chaperon, an excellent coach skilled in running such development programs. There was no charge for the Program. The benefits of the Program could be seen in the recent trials for ESFA SAL teams where many of those trying out had taken part in the Program.

At present discussions have taken place with the new 2011-12 Technical Director, Sally Patterson and new Coaching Director, Louis Chaperon regarding dates and times for the Development Program that seeks to foster stronger players as part of an ESFA managed football pathway. The Program will begin in May 2012, and will include age groups up to the U12s, involve the SAL squads to supplement their training and mirror the SAP, and may have a small fee to encourage players to not only start but continue and finish the program.

The July and September school holiday programs were well run with Louie Chaperon and his staff providing excellent age specific coaching, and administrative support from the General Manager and office. In 2012, there will be a longer lead time of advertising for holiday programs in the two weeks of the April, July and September holidays.

Accredited courses at Grassroots, Junior, Youth and Senior Community levels were run with Sally Patterson and Gary Moore as the instructors. Clubs and individuals at times did not attend after booking places, and again the weather disrupted a number of courses and suitable grounds were at a premium. Grassroots, Youth, Junior and Senior level courses as well as Goalkeeper specific are planned for 2012. ESFA will also host a FNSW Coaches' Update in late March, and then hold its first Update in late April, with an aim of providing regular coaching updates in the ESFA region to promote a local coaches' forum or 'council'.



School and club visits commencing with Grassroots courses were disappointingly few in number in 2011, and this is a definite area of development required in 2012. A school visits program commenced in July 2011, with an aim of raising the profile of football and provide information about local clubs and ESFA to potential players, parents and schools.

The 2011 season was another year of development of the ESFA Technical and Coaching Program. As the 2011 football year came to a close, ESFA Board appointed the highly credentialed and experienced Sally Patterson, an accredited FNSW instructor, which will provide ESFA with an excellent and proactive Technical Director, ably supported by Louis Chaperon, a very experienced coach, as the new Coaching and Development Officer. The splitting of the role of 'technical director' into these two positions closely reflects their roles, and brings two excellent people to work to the benefit of ESFA clubs and players.

**Andrew Field**

## MEN'S COUNCIL REPORT

The 2011 season has been another hectic one, due to the wet weather conditions on some weekends. However, with perseverance we got through it. Congratulations to Dunbar for winning the Premier League Competition and to all the AA, O35 and O45 teams who won their respective competitions, with the top four of each competition not being finalised until the final round, from the teams who made the semi-finals.

At the beginning of each season the grading of teams is an art and we try our utmost to please everyone but there will always be some disappointments.

I am concerned and disappointed that some clubs emphasise that they must win football games at all costs and I am a little concerned to hear about this attitude, but we do need to remember that there are winners and losers in football so the game should be treated as fun and enjoyed. Winning a game is just a bonus.

However, I will make the suggestion that from next season and all seasons into the future that the Association introduces a compulsory 'fair play day' to reinforce positive messages, teamwork and sportsmanship within the game. It would be a day to ensure that people in your club value fair play as essential and not just as an afterthought.

A big thanks, as always, to the Referees Branch for trying to cover all the games and their continuing improvement in 'leaps and bounds' from year to year and also to the kids who run the line, who hopefully do benefit from this experience.

The game of football, as I always say, is to be enjoyed by the players, spectators and officials alike and I am looking forward for this to continue next year and into the future. I wish you all the best for the off season and I hope the 2012 season will be an exciting and fair one for all.

### Wally Holzer

Men's League Council Chair

## WOMEN'S COUNCIL REPORT

This year 488 women players across All Age and Over 35s were registered with ESFA. A little higher than 2010 numbers, this is a good sign and improvement from the last few years where numbers were falling. This year the competition structure was clearly better coming back to the 3 divisions we originally had a few years ago, with 8 teams in each competition. It was great to see clubs putting in multiple teams into divisions, bringing a much more stable structure to competitions.

Unfortunately due to wet weather, the competitions fell into a hard stage of too many washed out games.

The main goal for ESFA in this situation was to let teams play as much football as possible and still come away with a good finals series. I think the Association achieved this successfully as we want our members to play as much football as possible during the season. Most feedback from clubs indicated that they were satisfied with the referees and the Branch was a lot more organized with the current structure. The O35s competition struggled, with teams pulling out at the last minute before the start of the season which made things difficult but the ladies took it in their stride and enjoyed the season as they always do with improvement of their skills from previous years.

Coogee United joined the Gladesville Hornsby Women's Association competition again and also for the right to represent ESFA in the 'Champions of Champions' competition. Coogee made it through to the semi finals of 'Champions of Champions' which is a great achievement.

Congratulations to the following Clubs for dominating the women's competitions this year - Dunbar, Coogee and Queens Park. Here are the results:

**AAW1:** League and Grand Final winners - Dunbar Rovers

**AAW2:** League and Grand Final winners - Coogee United FC

**AAW3:** League and Grand Final winners - Queens Park FC

**O33W:** League and Grand Final winners - Queens Park FC

Issues that the Women's Committee addressed throughout the year were mainly around competition structures and dropping out of teams. The main goals will be keeping to at least 3 divisions and increasing player numbers. Participation numbers are extremely important in building up the competition and it is up to clubs (as well as ESFA) to encourage.

Also, the wet weather did not help things leading up to the finals and clubs need to be supportive that ESFA will always do their best in the interest of players. Those with an interest in growing female participation numbers need to get involved a long time before the season starts to work on strategies as the unified approach has been missing in efforts pre-season. This applies for all AAW division and O35Ws.

### Julia Chernoukha

Women's League Council Chair

## JUNIOR COUNCIL REPORT

Season 2011 witnessed the U11s playing on a 'half' pitch with a 9v9 format, but competitively for the last time, as programmed by the FFA. This is a very successful format and the competition was of a high standard all the way through the season and into the final series. This was partly due to the fact that there were so many teams entered in the age groups from most, if not all, Clubs involved in Junior football. Unfortunately, this cannot be said of some of the other age groups that had only 11 teams nominating for up to 5 grade requests. Added to this, the weather affected games, and the desire of some Clubs to regrade a little too often. Consequently the competition barely scrambled across the finishing line.

The innovative make up of the 'Finals' series, promoted for the U11s, was taken through some of the age groups by playing groups of 4 teams, some crossing the divisional barriers (some of these results may prove interesting come grading time next season)! Other notable events during the course of the season included:

- Junior Grand Finals, U15/1 followed by U15/2 which were held on the coveted Hensley Field
- Junior night catch up games, courtesy of the new lights at Coral Sea Park
- The 'silent sideline day' at Christison Park for players to play 'their' game
- The Grand Finals at Heffron Park which was another well organized great occasion

It is an old cliché to say that there will always be winners and losers but for this past season I don't believe 'football' was a winner in some divisions and the need to revitalize is very evident - whether this means broadening the scope or combining age groups (particularly in the U13, U14 and U15s) will depend on the nominations that occur next year. In the meantime, many thanks to all the Club Delegates for their time and efforts in helping to construct a competition as fairly as possible for all our players. Thanks also to the ESFA competition staff, headed by Adam Giles, who put in the hours and juggled the season to fit most, if not all requests.

**Frank Friedman**  
Junior League Council Chair





## GIRLS' COUNCIL REPORT



Whilst all the Girls' and Junior competitions suffered from rain and a shorten season, the results of the Girls' League has been very positive. The strength of the Girls' League is showing in the older age groups where ESFA now fields more girl players than boy players in some ages.

Notwithstanding this, we need to continue to drive growth in the Girls' League to ensure sufficient players and teams to make viable competitions in all divisions. The G18 competition was a notable concern this year with only 3 viable teams playing in the North West competition and who did commendably well.

Highlights of the season include:

- Queens Park G14A team making it to the semi-finals of the Champion of Champions.
- Easts FC G12A, Maccabi G16A and Maroubra G18 competing in the Champion of Champions.
- Continuation of the G13 age group demonstrating the strength of the sport in this age.

I would like to thank all those club representatives that gave their time in and out of Council meetings to make the competitions work. Thank you also to the Aaron, Adam, and Ann.

**David Owens**

Girls' League Council Chair

## SMALL SIDED FOOTBALL COUNCIL REPORT

In 2011, the rollout of SSF games was extended to include the U10 age groups, while U11s remained 11 a side on a full pitch, with competition tables and a commitment for the winning Division One team to represent ESFA in the FNSW Club Champion of Champions Competition. The U6 and U7 age groups play in an 'academy' style largely club based program on Saturday mornings at their home grounds at a set time each week, with three or four inter club days each year, and the U8, U9 and U10 play interclub matches each week in a draw administered by the ESFA competition secretary, with a gala day in the final weeks of the season.

Two clubs, Pagewood and Queens Park not only had no U6 to U9 teams registered with ESFA as in 2010, but in 2011, had no U10 teams. This was severely disappointing to the bulk of ESFA clubs and to the Board of Directors. Despite meetings between the Board, FNSW and FFA, and ESFA club presidents involved in SSF, this situation has continued.

At the end of the 2010 season it was agreed by the SSF clubs at a debriefing and subsequent SSF Council meeting, that there would be changes to improve the ESFA SSF program, building on the 2010 season's successes. These changes included attempting to get all games of particular age groups as far as possible to be played at a similar time each week, and a change in emphasis for the Sunday games against Maccabi teams. In 2010, games from a certain age group could occur across the full time slots of a Saturday, making it difficult for Club volunteers to put up and dismantle appropriate markings and goals for different age groups on their grounds, and all Maccabi games were played on Sundays, which some clubs and teams found difficult. It was decided that Maccabi would go back to having the majority of their teams play on Saturdays, and only a small number of their teams in each age group play on the Sundays, and that club teams could play the Sunday games as extra games in addition to their Saturday games.

However, the SSF (previously the SSG) Council meeting in early 2011, voted to place the Sunday Maccabi games back into the draw. Also, ground availabilities at Queens Park and elsewhere, where Councils demanded that every game at a ground must include a home team from the leasing club, made it difficult to schedule particular age groups at similar times every Saturday.

The season had five washed out weekends and was difficult to manage from the aspect of the draw.

The other continuing problem is with grading. The SSF because it has small teams tends to highlight the disparity in player and team ability. To try and achieve 'ability matching', each club was given the ability to change its teams from week to week, all players being eligible to move up or down within their age group, or a club could move a whole team, as sanctioned by the SSF Council, which controls the Program.

At a recent debrief the SSF clubs agreed that there had to be a push by all clubs to gain access to grounds for the whole of Saturdays so that each age group could have a set time slot of several hours across the ESFA program; to work with ESFA, Councils and the Centennial and Moore Park Trust to improve and achieve consistent ground markings; to attempt to grade their teams more accurately through early season grading weekends organized by ESFA and internal club grading; and to work within the SSF Council to establish more consistent criteria for grading of teams. Further, the SSF Council asks that ESFA take on a central role in advertising the SSF clubs and what they can offer, including ESFA based development programs for U8 to U12 age groups, with full page adverts in January and February, carrying all clubs contact details and registration dates and times.

In 2012, the final stage in the FFA and FNSW mandated rollout of the SSF by ESFA will extend to U11s playing 9 v 9 games on half fields or penalty area to penalty area as in the U10s in 2011. There is push among some clubs to retain a competition with Tables in the older SSF age groups, and this will need discussion as FFA mandates that there be no Tables kept, and that SSF players be encouraged to play and develop without the often parental pressure to win games.

The SSF Council will work together and with ESFA Board and the ESFA Coaching and Technical Directors to deliver an even better Program in 2012 with the aim of delivering quality football to all, beginners, participants and advanced players in the SSF age groups.

#### **Small Sided Football Council Chair**

## **DIRECTOR OF CORPORATE AFFAIRS REPORT**

As the Director who represents the members of Eastern Suburbs Football Association at Football NSW I wish to report that 2011 has been a time of change for our governing body.

With a Commission of Inquiry into Football in New South Wales chaired by Ron Hoenig in August 2010, the outcome saw the majority of the Board resign at the end of 2010 with an interim board appointed. The CEO, Michael Quarmby, also resigned his position. One Board Member remained, the now Chairman Robert Sestan.

Football NSW members appointed the interim board for 6 months and immediately began reviewing the entirety of administration and operations. At a Special General Meeting on 30 August 2011 Football NSW members voted to change the constitution.

The changes include fundamental changes to the election of Directors and the direct election of Chairman by the Board. Directors must now meet a series of core competencies and skill based criteria prior to their election by the membership.

During 2011 Football NSW welcomed a new CEO, Eddie Moore. Longstanding General Manager Ian Holmes now holds the position of Head of Game Development & Member Services.

The Annual General Meeting in October saw three new Directors elected: Jeanette Jones, Greg O'Rourke and Simon Phillips. Simon Phillips in particular is familiar to many members of the Eastern Suburbs Football Association.

Notwithstanding ESFA's own changes during the 2011 year, ESFA recognizes and welcomes the positive steps on governance and member engagement that have commenced within our governing body. The Board of ESFA look forward to working hand in hand with Football NSW in coming years to ensure that these changes are of benefit to our members and the game.

**Michelle Bogatyrov**

Director of Corporate Affairs

## REFEREES' BRANCH CHAIRMAN'S REPORT

Once again we have had a very successful season with more new referees coming on board than last season. Below is a breakdown of the coverage which makes for encouraging reading going forward.

COMPETITION	REF	AR1	AR2
PL	100%	100%	94%
PLR	100%	100%	88%
<b>TOTAL</b>	<b>100%</b>	<b>100%</b>	<b>91%</b>
AA	90%	60%	32%
AAW	90%	60%	32%
O35	86%	63%	40%
O35W	86%	68%	34%
<b>TOTAL</b>	<b>92%</b>	<b>75%</b>	<b>53%</b>
U18	83%	83%	54%
GIRLS	90%	70%	34%
JUNIORS	93%	73%	43%
SSG	72%		

Another tremendous effort from our dedicated officials.

### DISCIPLINE

During the season I attended a judicial hearing where a player was reported for assaulting a referee and I was glad to see that the committee dealt very severely with the player. This, gladly, was an isolated incident and long may that continue. I am sure that we are all in agreement that this sort of incident must be stamped out from the game. The referee was fortunately not hurt and it has not discouraged him from refereeing.

### MOVING FORWARD

With our Branch Coach, Alex Spiroski, in full flow during the summer, we have started an elite training programme which is aimed at the younger referees who we think have the potential to really make a mark in refereeing and with all other officials having the opportunity to attend regular training sessions during the season.

We plan to have more referees courses in the future. There is a disparity in the age groups for referees. We would like to encourage more people between the ages of 20-30, so if you know anyone interested in 'taking up the whistle' please let us know. Also, in the over 35 comp, I am sure there is a lot of experienced players that could be put to good use as referees, as there cannot be much more mileage left to play in those



wearily legs, but plenty to start refereeing! I know a few people who started refereeing after they finished playing and wished they had started earlier.

I think we are making progress little by little every season and would love to see, in the not too distant future, all games covered over the weekend. During one of our Referees meetings a panel of coaches/refs from the Premier League attended for a 'question and answer' night, which went down very well with both the Referees and Club Representatives and we would like to do the same next season.

I am a firm believer, as some of you know, of good communication between officials and teams, and once again we offer our services to come and talk to your Clubs during the season to give our insight into refereeing and what is expected in return from players, coaches etc.

Have a great summer and look forward to next season.

Best wishes

**Paul Matthews**  
Referees Branch Chairman



## REFEREES' COORDINATOR'S REPORT

Coming into the 2011 season after three successful years of recruitment and coverage the main objective for the upcoming season was to implement methods to improve the overall quality of referees. The expectations set by the outstanding outcome from previous years meant that would be difficult but not unachievable.

I would firstly like to thank the ESFA staff and committee members for giving me the opportunity to fulfill the role as ESFA Referees Coordinator. This year has been very challenging and I couldn't have survived without the Referees Committee. Both staff and committee members instilled confidence in me to fulfill my role to the best of my ability and I would like to particularly thank Adam Giles, George Magoulias, Gregory Calacouris and Louise Mazzaroli, who have been but a few of the many helping hands I received.

Like players, the Referees Branch commenced the year with pre-season training. The sessions were taken by none other than the Chairman, Paul Matthews, who was gasping for air after every session.

By the commencement of the season another 109 new referees were recruited, increasing the Branch numbers to 442.

<b>Active referees</b>	<b>228</b>
• Male Referees	71
• Male Youth	105
• Female Referees	6
• Female Youth	21
• Cadets	25

The 2011 season brought about new aspirations and goals for the Branch, though having to fill the massive void left by both Gregory Calacouris and Adam Giles was a challenge. But I was honoured to be given the opportunity to maintain the operation and progression of the Branch.

As stated previously, the main focus of the Branch this year was to develop the overall skills of its members. Throughout the season the Branch implemented new 'Technical Training Sessions' which ran weekly on Thursday evenings. On these evenings both Youth and Senior Referees combined together to learn more about the laws of the game from our Branch Coach, Alex Spiroksi. This initiative included video analysis, role playing scenarios and quizzes to improve the knowledge and understanding of our referees. The Branch sees this as only a stepping stone to greater things.

Venturing into the pre-season for 2012 you should expect to see Level 3 Upgrade Courses as well as Level 3 Inspector Courses being run in the Eastern Suburbs for the first time since the establishment of the new Referees Branch.

### ESFA REFEREES AWARDS 2011

#### Refs from the PL Grand Final - Dunbar Rovers V Waverley Old Boys - 27th August

- Referee: Robert Sypher
- Assistant Referee: Ned Sparkes
- Assistant Referee: Dillon Fuzi
- 4th Official: Paul Matthews

#### KO Cup - Maroubra United PL V Dunbar Rovers AA1A - 8th September

- Referee: Matthew Croucher
- Assistant Referee: Ben Abraham
- Assistant Referee: Alexander Imvriotis

#### Special Awards for Season 2011

- Referee of the Year: Robert Sypher
- Junior Referee of the Year: Nicholas Kazacos
- Ladies Referee of the Year: Maddalena Musumeci-Field
- Life Membership: Louise Mazzaroli

#### Ben Abraham

Referees Coordinator



## METROPOLITAN REPRESENTATIVE LEAGUE REPORT

The 2011 season was a very successful season in terms of results and the development of the players. An extra team, the Western Branch based at Bathurst, was added to the Northern Conference draw producing an extra two games for the ESFA teams and a three week longer season.

The teams trained at South Sydney High ground and Heffron Park, and played home games at ES Marks field. There were significant problems with the closure of these venues during wet weather periods. ESFA is in desperate need of a home ground of sufficient standard that we control that can be used for elite training and games, accredited coaching courses, development squads and club games.

Unlike 2010, boys selected in the FNSW Project 22 in the 2011 season, were able to choose to play in the Metro teams as well. Two boys from the 2010 U11 squad were selected in the U12 Skillaroos at the end of the 2010 season.

The U12 team was very well coached by Ross O'Sullivan, who had coached the team to the premiership and championship in 2010. The team won the Northern Conference after two full rounds, and after playing each of the Southern Conference teams once, topped the table clear of any other team. The team then won the Grand Final and the Championship. Earlier in the season, the team won the annual week long FNSW U12 Centenary Cup in Wollongong in April.

Congratulations are extended to the seven boys who made the Metro East U12 team which came second at the State Titles in September, and to Daniel Arzani who went on to be selected in the FNSW U12 Skillaroos team, which in 2012 will play in the FNSW PYL U13 competition.

The U11 team was coached by the writer, and also won the Northern Conference component of the competition, eventually finishing equal first on the table at the end of the season. The team then took part in the semi finals, but did not make the grand final.

Congratulations to the six boys who made the Metro East U11 team that finished equal first on points, second on goal average at the State Titles in September.

ESFA would like to thank the boys, the committed parents and the managers of the two teams, Con Kery and John for the U12s and Michael Bremner and John Skotadis for the U11s. As convenor for the Metropolitan Teams in 2011, I would very much like to thank the General Manager Aaron Dibdin for all his assistance in managing the teams.



The 2012 teams have been selected. FNSW has renamed the Metropolitan League, as the Skills Acquisition League, to supplement the now called Skills Acquisition Program for U9 to U12s. The SAL will not have competition points or tables, and the Frank Broughton Cup for U11s and the Centenary Cup for U12s will be played as final series in late August and September.

This is a year of transition which unfortunately sees ESFA, St George and Canterbury Associations grouped with one SAP squad in the U11/12 age group while six other Associations have been given stand alone SAP programs, one per Association.

Apart from the unfairness of the boys from our three Associations having to compete to get into one SAP squad, the SAP selected boys are not allowed to be formal members of our SAL teams and can only play on a rotation in our SAL teams. Meanwhile, the Associations who have stand-alone SAP programs have been able to integrate the SAP selected boys with their SAL teams.

This is very difficult to manage and, as in 2010, has led to boys and their concerned parents having to decide between SAP and SAL. We sincerely hope FNSW will correct this in 2013 and link ESFA to its own Eastern Suburbs SAP. ESFA Metropolitan League teams have won four championships (2006, 2008, 2010, 2011) and two premierships (2010 and 2011) in the last 6 years, despite having one of the smallest player bases, and it is entirely appropriate that ESFA have its own SAP.

**Andrew Field**

## EASTERN UNSW LIONS REPORT

The Eastern UNSW Lions is a joint venture between UNSW and ESFA in order to provide pathways for girls and women in the eastern Suburbs. It currently fields teams in the Football NSW Super League.

In its second season, the Lions' continued their march up the club championship, building on a successful first season. The club came sixth overall, with three out of the five teams making the semis. The U12s, Reserve Grade and First Grade all came fourth in their respective leagues. The U12s and First Grade were beaten 2-1 in their first semi and the Reserve Grade squad made the preliminary final, only to be beaten to a grand final spot on a penalty shoot out.

Congratulations to the Lions' own Amanda Watson, our First Grade goalkeeper and team captain, who received the Women's Super League Goalkeeper of the Year Award at the 2011 Football NSW Platinum Medal Awards Night.

The ESFA/Lions development programme continues to grow. With the new, first-class David Phillips complex completed, and building on the previous three seasons, our programme is among the best in Sydney outside the NSW Institute of Sport.

The Lions' North Harbour Tournament U11 squads did very well. Two squads were entered, one in pool A and another in B. Both finished a creditable third. The Lions pool A result was particularly encouraging with a very young squad, of which over half were under 10.

The Lions youth programme is rapidly gaining a reputation for the quality of its teams. Feedback from players and parents involved has been very positive. We received compliments from the NHT winners, the Stingrays', and the KDSA Tigers' coaching staff at the NHT.

The Lions U12s played good football this season, earning praise for the quality of their play from the KDSA Tigers, Gladesville Ravens, and Northbridge coaches, among others. Despite suffering a defeat in the semi-final, those who watched would have been impressed by the performance. This was the first year we competed in the Cheryl Salisbury Cup, which was also a good display of attractive football. Despite being short of players, the team played some very good football. The experience will be good preparation for this coming season.

This 2012 season is shaping up as a very exciting one, with the club aiming to have four out of five teams in the semis. The Lions have attracted quality players into the senior squads, including some from ESFA clubs. It is good to see the pathway allowing female players from ESFA progress through the ranks: the 14s team is mostly made up of players that have come through our U12s and development programme. With this rate of progress, and continued support, the Lions are rapidly building a profile as a major player in the NSW football landscape.

**Peter Kriesler**





## ESFA JUDICIARY

As the 2011 ESFA winter season draws to an end I thought the following statistics and observations may be of interest.

The active JC panel this season has consisted of Cliff Savala, Stephen Digby, Joel Conomos, Carole Dawes, and myself.

I cannot emphasise strongly enough the amazing level of commitment and contribution by Cliff, Stephen, Joel, and Carole. Each of them has willingly contributed their time, their professional skills, and their wise counsel to a process which, by its very nature, sometimes involves players, officials or clubs in some degree of dispute.

The JC was convened on 20 occasions and heard a total of 86 matters.

JC panel members have been generous with their time and their diligence has ensured that a quorum was available every time a Hearing was required - this ensured that ALL matters were heard immediately the JC was made aware of a citation.

The support and cooperation of JC members has ensured that, of 86 Judgements and Reports, 83 have been delivered on the day following the Hearing, and 3 the day thereafter.

JC panel members have heard the following number of matters...

• Cliff Savala	40
• Stephen Digby	20
• Joel Conomos	27
• Carole Dawes	17
• Chris Conway	86

The support of the ESFA staff has contributed significantly to achieving these enviable outcomes;

I thank all the staff, and particularly Aaron, for their contribution to the activities of the JC.

During the off season it is likely that JC members will hold discussions to identify how, or if, the procedures and structures currently in place can be improved; it is likely that we will consult and collaborate with the ESFA Administration to review the JC Manual before submitting recommendations for your consideration.

I have yet to put this process in place and rather expect that it will involve a series of fairly informal conversations between JC members.

Without pre-empting any outcomes of such a review, and without elaborating (at this stage) on the genesis for consideration, I can be confident that we will canvass, but not limit our discussions to, the following:

1. Citation procedure
2. Mandated minimum penalties
3. Submission of Guilty pleas in writing and what (if any) penalty discount should apply
4. Attendance of Referees at Hearings
5. Attendance of Club Officials to support their members at Hearings
6. Hearings as a result of Club submitted reports (as opposed to Referees' reports)
7. Clarification of protocols regarding an appearance by Respondents under 18 years of age

I hope these brief and initial observations are of value and I again highlight the invaluable role played throughout season 2011 by (in order of appointment) Cliff, Stephen, Joel, and Carole.

**Chris Conway**  
Chairman



## COMMUNICATIONS REPORT

This year has seen a significant push across several communication platforms by the Association. I am grateful to be involved with these objectives and to be given the opportunity to fulfil the new role, as I have found the work tremendously rewarding. There are countless stories across ESFA and I have enjoyed publishing as many of these as possible to the entire community.

ESFA's digital communications have had a constant flow of news and information, which has been well received by regular users and has allowed the Association's voice to be heard. The redesigned website has received over 1100 visits per day and our e-newsletter, is distributed monthly to over 7000 recipients. The jump into social media, across Facebook and Twitter, has seen a growth of two way communication with members. Our dedicated wet weather Twitter feed proved quite popular this season and demonstrated a taste for social media engagement in the area. These platforms will prosper in the future as tools for the Association to engage with our members.

As this is the first year with a Communications role at ESFA it has not been without teething issues. I see this not as a hindrance but an opportunity to respond to what can evolve and progress. Covering such a large community has, at times, been difficult. It is important to see community engagement and the response from the photography competitions was a wonderful example of this objective. I would like to see more of this in the future for the good of the grassroots football community in ESFA.

I thank the ESFA Board, both past and present, for driving the implementation of the Association's communications and to Aaron Dibdin, for his continued support of my work.

I believe that 2011 has been a significant leap toward building a profile for the good of football in the Eastern Suburbs and to communicating with our members and the entire Eastern Suburbs community. Our digital media expansion has seen ESFA lead the communications front for both clubs and other associations. Nonetheless, through continued hard work, communications in ESFA will mature and strengthening the public relations portfolio of the Association in 2012 is an important step.

**Gregory Calacouris**  
Communications Officer

## SPONSORSHIP REPORT

2011 was ESFA's most successful year to date, in terms of the recruitment and servicing of sponsor partners.

This season saw the continuation of commercial agreements with Love Football and Link Market Services. Link Market Services partnership with the ESFA White Knights, part of ESFA's Accessible Football Program, provides support to this and offers opportunities for Link's employees to volunteer at these events.

2011 also saw the announcement of several new partnerships, with a range of both regional and national businesses. Jazzright Production Services partners with our Metro Representative Teams and provided valuable production experience and know how in delivering event management at our Grand Finals. AllConnect Telecommunications signed up as naming partner of our School Holiday Clinics and provided a genuine 'money can't buy' promotion for ESFA members. Other partnerships were also agreed with Lucas Quality Meats of Bronte, Teamsports Australasia and FourFourTwo Magazine.

We would like to thank all sponsors for their support during 2011 and look forward to working with them again.

**James Venn**  
Sponsorship Officer



## WHITE KNIGHTS REPORT

This season has been a fantastic year of growth and development for the White Knights program. Started in 2010, the White Knights program aimed to foster and develop a football community for people within the Eastern Suburbs community with special needs.

At the beginning of the 2011 season, the White Knights took a name change from ESFA White Knights to Link Market Services White Knights, when Link Market Services came on board as the naming sponsors. Link Market Services' generosity can be contributed to the successful growth of the White Knights program, as the financial assistance has allowed the program to employ two of the most experienced, enthusiastic and remarkable coaches in John Hunt and Stuart Zanchi. John and Stuart's enthusiasm, patience and innovation has resulted in a remarkable improvement to the players wellbeing, motor skills and most of all their confidence which they have transferred over into everyday life.

In 2011, the program saw a 50% growth in player registrations with just over 20 players registered.

One of the main highlights of the program was the Football4All Gala Day held by Football NSW. ESFA took the players out to Glenwood, where they competed against other Special Needs Clubs in a carnival atmosphere. The carnival offered the players the opportunity to put all their skills and techniques learnt into practice and within an environment which was very unfamiliar to many of them.

So, as we reflect upon 2011, I look forward to the upcoming season and would like to take this opportunity to thank the players and parents, Link Market Services, the NSW Government, John Hunt and Stuart Zanchi and the entire Eastern Suburbs football community for their support, guidance and enthusiasm in getting the program to where it is today.

It has been a pleasure to be involved in and around such an incredible group of people and I look forward to watching the continual success and development of the Link Market Service White Knights.

### **Taleah Neowhouse**

White Knights Coordinator





## SATISFACTION SURVEY REPORT

This season ESFA conducted a satisfaction survey for the first time, to gain a better understanding of what our registered participants are thinking about football and about ESFA.

While much of the data collected was of purely statistical interest, it was important for us to delve into the open responses to see people's volunteered opinions.

Common responses to 'the best thing about ESFA':

- They like football
- The competition is generally well organised
- It's a good standard of football
- They like the social aspect - their team, their club
- The games are close to home, it's convenient
- Good communications - website and newsletter

These are what we would expect. People play the game because they love it, they love the sport itself, they are part of a club and a team and that is their primary engagement. We don't expect people to love the Association, but we hope to have their respect - we want to run a well organised, well regarded competition and we want to give participants the greatest opportunity to enjoy their football with their teammates and their club.

Common responses to 'the worst thing about ESFA':

- Changes of games, cancellations and washouts
- Chopping and changing to competition formats and grading
- Cost
- Lack of referees
- Poor quality fields and facilities
- Overly competitive parents

The biggest point of interest for us is that there were issues that combined frequently - especially grounds. Wet weather caused endless headaches in 2011 - we had more than half of all weekends affected at least in part by wet weather. This had two consequences that have shown up in our survey responses.

Often the same respondents were angry that the fields are in poor condition and that fields close too early when it rains. This really is an either/or situation - unless we were to have artificial turf pitches across the board, wet weather will result in ground closures. Where grounds are not closed, playing on wet pitches damages them. Some of our grounds showed the wear and tear of being played on when wet until the end of the season

- Heffron 4 was in particularly poor condition but there were others.

The Association is generally not the body that chooses whether or not to close grounds. Ground providers (generally councils and Centennial Parklands) make the decision about their grounds. This is the main reason why some grounds remain open when others close. These decisions are usually made on the morning of the game, hence the late notice to clubs of closures. The alternative is to provide earlier notice of closures, but you can expect that ground providers will err on the side of caution, meaning more closures. Leaving it late gives us every chance to get games played.

Cost and referees were another factor. Respondents feel frustration stemming from a feeling that for what they pay they should have a referee every week. The Association has improved referee coverage over the years, but while coverage is not 100% we will never be entirely happy.

Cost generally is a sore point. We carry a certain amount of fixed cost that we incur as soon as we open the door, and beyond the fixed cost there are the player by player registration costs.

For 2012, ESFA is reviewing its competition rules and structures and we endeavour to do away with as much of the 'chopping and changing' as we can. We want people to play in stable, well organised competitions and enjoy their football, not worry about decisions made in League Council meetings. We also want to make sure we can maximise the amount of football that we can play in the times we have grounds available to us.

Lastly, we asked people if they would recommend playing in ESFA. We are pleased to see there are very few who would not recommend playing in our competition (10%), and that the largest number of people (36%) are 'very likely' to recommend playing here. We want to grow these numbers in the future.





## 2011 LEAGUE AND PREMIER WINNERS - BOYS

DIVISION	LEAGUE CHAMPIONS	GRAND FINAL WINNER
U11 / U11A	11 RED QUEENS PARK	11A MAROUBRA UNITED
U11 / U11B	11A MASCOT KINGS	11A EASTS
U11 / U11C	11C OLYMPIC EAGLES FC	11B MACCABI
U11 / U11D	11E QUEENS PARK FC	11B MAROUBRA UNITED
U11 / U11E	11G MAROUBRA UNITED	11R REDDAM HOUSE
U11 / U11F		11D QUEENS PARK
U11 / U11G		11C MACCABI JUNIOR SC
U11 / U11H		11SB MACCABI JUNIOR SC
U12 / U12A	12A EASTS	12A MASCOT KINGS
U12 / U12B	12A MAROUBRA UNITED	12B EASTS
U12 / U12C	12B PAGEWOOD	12B COOGEE UNITED
U12 / U12D		12D QUEENS PARK
U13 / U13A	13A PAGEWOOD	13A PAGEWOOD
U13 / U13B	13B QUEENS PARK	13B EASTS FC
U13 / U13C	14A HEFFRON HAWKS	13S MACCABI
U14 / U14A	14A MASCOT KINGS	14A HEFFRON HAWKS
U14 / U14B		14A MASCOT KINGS
U15 / U15A	15A QUEENS PARK FC	15A QUEENS PARK FC
U15 / U15B	15C MAROUBRA UNITED	15D MAROUBRA UNITED
U16 / U16A	16A EASTS	16A QUEENS PARK FC
U18 / U18A	18A HEFFRON HAWKS	18A HEFFRON HAWKS

## LEAGUE TABLES

### U11/1

TEAM	P	W	L	D	F	A	GD	Pts	Adj	Pt
11RED QUEENS PARK	10	8	2	0	26	8	18	0		24
11A MACCABI	11	6	2	3	28	14	14	0		21
11A PAGEWOOD	9	6	1	2	28	12	16	0		20
11A MAROUBRA UNITED	11	5	4	2	25	18	7	0		17
11A EASTS	9	1	8	0	7	30	-23	0		3
11WHITE QUEENS PARK	10	0	9	1	9	41	-32	0		1

### U11/2

TEAM	P	W	L	D	F	A	GD	Pts	Adj	Pt
11A MASCOT KINGS	11	8	2	1	44	14	30	0		25
11A COOGEE UNITED	12	8	3	1	31	13	18	0		25
11C QUEENS PARK	12	5	3	4	21	19	2	0		19
11B MACCABI	10	5	4	1	20	19	1	0		16
11S MACCABI	12	4	6	2	22	29	-7	0		14
11B PAGEWOOD	11	4	6	1	31	33	-2	0		13
11B MAROUBRA UNITED	4	2	2	0	11	6	5	0		6
11C EASTS	10	0	10	0	7	54	-47	0		0

### U11/3

TEAM	P	W	L	D	F	A	GD	Pts	Adj	Pt
11C OLYMPIC EAGLES FC	13	8	1	4	43	18	25	0		28
11L QUEENS PARK FC	12	9	2	1	27	13	14	0		28
11D EASTS FC	12	7	2	3	28	17	11	0		24
11C PAGEWOOD	11	6	4	1	26	20	6	0		19
11R REDDAM HOUSE	13	6	6	1	32	30	2	0		19
11B EASTS	8	4	4	0	11	16	-5	6		18
11B COOGEE UNITED	12	2	10	0	15	29	-14	0		6
11D QUEENS PARK	12	0	10	2	10	32	-22	0		2

### U11/4

TEAM	P	W	L	D	F	A	GD	Pts	Adj	Pt
11E QUEENS PARK FC	12	8	4	0	40	25	15	0		24
11F QUEENS PARK FC	12	6	5	1	28	24	4	0		19
11C COOGEE UNITED	12	6	6	0	38	22	16	0		18
11D PAGEWOOD BOTANY FC	12	6	6	0	28	43	-15	0		18
11C MACCABI JUNIOR SC	12	5	7	0	27	42	-15	0		15
11RED MAROUBRA UNITED	11	2	8	1	9	31	-22	0		7

**U11/5**

TEAM	P	W	L	D	F	A	GD	Pts	Adj	Pt
11G MAROUBRA UNITED	11	7	3	1	38	17	21	0		22
11SB MACCABI JUNIOR SC	12	6	4	2	29	32	-3	0		20
11D MACCABI JUNIOR SC	12	5	5	2	21	27	-6	0		17
11E EASTS	11	5	5	1	24	27	-3	0		16
11B MASCOT KINGS	8	4	3	1	28	22	6	0		13
11T MAROUBRA UNITED	12	1	8	3	12	27	-15	0		6

**U12/1**

TEAM	P	W	L	D	F	A	GD	Pts	Adj	Pt
12A EASTS	12	11	1	0	38	6	32	0		33
12A COOGEE UNITED	13	8	3	2	21	11	10	0		26
12A MACCABI	13	5	5	3	11	16	-5	0		18
12A MASCOT KINGS	12	4	5	3	12	13	-1	0		15
12A QUEENS PARK	13	4	8	1	14	23	-9	0		13
12B EASTS	13	1	11	1	8	35	-27	0		4

**U12/2**

TEAM	P	W	L	D	F	A	GD	Pts	Adj	Pt
12A MAROUBRA UNITED	8	4	1	3	17	10	7	0		15
12B QUEENS PARK	7	4	1	2	17	9	8	0		14
12B COOGEE UNITED	7	3	1	3	17	10	7	0		12
12A PAGEWOOD	7	2	3	2	21	19	2	0		8
12S MACCABI	7	0	7	0	8	32	-24	0		0

**U12/3**

TEAM	P	W	L	D	F	A	GD	Pts	Adj	Pt
12B PAGEWOOD	3	1	0	2	4	3	1	0		5
12C QUEENS PARK	4	1	1	2	9	9	0	0		5
12D QUEENS PARK	3	1	1	1	6	6	0	0		4
12B MAROUBRA UNITED	2	1	1	0	3	3	0	0		3
12C EASTS FC	2	0	1	1	2	3	-1	0		1

**U13/1**

TEAM	P	W	L	D	F	A	GD	Pts	Adj	Pt
13A PAGEWOOD	6	4	1	1	14	10	4	0		13
13A QUEENS PARK	6	3	3	0	13	10	3	0		9
13A EASTS	7	2	4	1	14	14	0	0		7
13B EASTS FC	1	1	0	0	2	0	2	0		3
13C PAGEWOOD BOTANY FC	2	1	1	0	4	8	-4	0		3

**U13/2**

TEAM	P	W	L	D	F	A	GD	Pts	Adj	Pt
13B QUEENS PARK	6	5	1	0	16	6	10	6		21
13S MACCABI	7	3	4	0	17	19	-2	0		9
13B PAGEWOOD	5	1	4	0	4	12	-8	6		9
13A MAROUBRA UNITED	2	2	0	0	7	2	5	0		6
13A OLYMPIC EAGLES FC	7	2	5	0	8	16	-8	0		6
13A MASCOT KINGS	1	0	1	0	0	2	-2	0		0

**U14/1**

TEAM	P	W	L	D	F	A	GD	Pts	Adj	Pt
14A HEFFRON HAWKS	9	6	2	1	11	4	7	0		19
14A QUEENS PARK	9	5	3	1	13	13	0	0		16
14A MAROUBRA UNITED	9	4	5	0	17	13	4	0		12
14A MACCABI	9	2	7	0	10	21	-11	0		6

**U14/2**

TEAM	P	W	L	D	F	A	GD	Pts	Adj	Pt
14A MASCOT KINGS	12	11	0	1	43	8	35	0		34
14B QUEENS PARK FC	11	6	4	1	25	10	15	0		19
14B MACCABI	12	5	4	3	28	17	11	0		18
14A PAGEWOOD	7	3	3	1	18	10	8	7		17
14A EASTS	3	0	3	0	3	9	-6	10		10
14B MAROUBRA UNITED	11	0	11	0	6	69	-63	0		0

**U15/1**

TEAM	P	W	L	D	F	A	GD	Pts	Adj	Pt
15A QUEENS PARK FC	13	10	3	0	44	15	29	0		30
15A MAROUBRA UNITED	11	10	1	0	36	8	28	0		30
15S MACCABI JUNIOR SC	12	6	3	3	19	19	0	0		21
15A MASCOT KINGS	8	4	3	1	25	10	15	7		20
15B MAROUBRA UNITED	14	2	9	3	20	32	-12	0		9
15A EASTS FC A	12	2	7	3	14	48	-34	0		9
15A PAGEWOOD	14	2	10	2	14	40	-26	0		8

**U15/2**

TEAM	P	W	L	D	F	A	GD	Pts	Adj	Pt
15C MAROUBRA UNITED	14	8	3	3	25	21	4	0		27
15D MAROUBRA UNITED	12	7	5	0	36	26	10	0		21
15B PAGEWOOD	13	6	4	3	28	21	7	0		21
15B EASTS FC	13	2	11	0	13	34	-21	0		6

**U16/1**

TEAM	P	W	L	D	F	A	GD	Pts	Adj	Pt
16A EASTS	14	10	3	1	39	19	20	0		31
16A MASCOT KINGS	14	7	3	4	36	32	4	0		25
16A PAGEWOOD	14	7	4	3	36	18	18	0		24
16A QUEENS PARK FC	14	8	6	0	31	20	11	0		24
16A COOGEE UNITED	14	6	6	2	26	35	-9	0		20
16BLUE MACCABI JUNIOR SC	14	5	6	3	37	40	-3	0		18
16RED MACCABI JUNIOR SC	14	4	7	3	29	37	-8	0		15
16A MAROUBRA UNITED	14	0	12	2	18	51	-33	0		2

**U18/1**

TEAM	P	W	L	D	F	A	GD	Pts	Adj	Pt
18A HEFFRON HAWKS	15	11	1	3	79	19	60	0		36
18A MAROUBRA UNITED	14	9	4	1	38	30	8	0		28
18A MACCABI	14	8	3	3	54	20	34	0		27
18A EASTS	13	7	5	1	33	30	3	0		22
18A MASCOT KINGS	16	3	13	0	33	79	-46	0		9
18B MAROUBRA UNITED	14	1	13	0	17	76	-59	0		3



## 2011 LEAGUE AND PREMIER WINNERS - GIRLS

AGE GROUP	LEAGUE CHAMPIONS	PREMIERS
G11 / G11A	G11A EASTS FC	G11A EASTS FC
G11 / G11B	G11S QUEENS PARK FC	G11K QUEENS PARK FC
G12 / G12A	G12A EASTS	G12A EASTS
G12 / G12B	G12A COOGEE UNITED	G12A COOGEE UNITED
G12 / G12C		G12K QUEENS PARK
G13 / G13A	G13A QUEENS PARK	G13A QUEENS PARK
G13 / G13B		G13A PAGEWOOD BOTANY FC
G14 / G14A	G14A QUEENS PARK	G14A EASTS FC
G14 / G14B	G14A COOGEE UNITED	G14A COOGEE UNITED
G14 / G14C		G14C QUEENS PARK
G16 / G16A	G16A MACCABI	G16A MAROUBRA UNITED
G16 / G16B	G16 EMERALDS MAROUBRA UNITED	G16 EMERALDS MAROUBRA UNITED
G16 / G16C		G16B MACCABI B



**G11/1**

TEAM	P	W	L	D	F	A	GD	Pts	Adj	Pt
G11A EASTS FC	8	6	1	1	19	5	14	0		19
G11P QUEENS PARK FC	8	6	1	1	10	5	5	0		19
G11A PAGEWOOD BOTANY FC	8	3	2	3	16	14	2	0		12
G11D MAROUBRA UNITED	8	0	5	3	4	16	-12	0		3
G11K QUEENS PARK FC	8	0	6	2	7	16	-9	0		2

**G11/2**

TEAM	P	W	L	D	F	A	GD	Pts	Adj	Pt
G11S QUEENS PARK FC	4	3	0	1	13	2	11	0		10
G11A MACCABI JUNIOR SC	4	2	1	1	8	6	2	0		7
G11G MAROUBRA UNITED	4	1	2	1	6	8	-2	0		4
G11B EASTS FC	4	0	3	1	2	13	-11	0		1

**G12/1**

TEAM	P	W	L	D	F	A	GD	Pts	Adj	Pt
G12A EASTS	13	12	0	1	32	2	30	0		37
G12P QUEENS PARK	12	6	3	3	9	11	-2	0		21
G12A PAGEWOOD BOTANY FC	12	6	6	0	22	18	4	0		18
G12D QUEENS PARK	13	5	7	1	16	16	0	0		16
G12B EASTS B	13	4	8	1	12	25	-13	0		13
G12A MACCABI	13	1	10	2	5	24	-19	0		5

**G12/2**

TEAM	P	W	L	D	F	A	GD	Pts	Adj	Pt
G12A COOGEE UNITED	13	12	0	1	57	3	54	0		37
G12W QUEENS PARK	13	6	4	3	15	17	-2	0		21
G12K QUEENS PARK	13	5	5	3	19	24	-5	0		18
G12A MAROUBRA UNITED	13	5	6	2	16	18	-2	0		17
G12C EASTS	13	2	8	3	9	23	-14	0		9
G12B PAGEWOOD BOTANY FC	13	1	8	4	9	40	-31	0		7

**G13/1**

TEAM	P	W	L	D	F	A	GD	Pts	Adj	Pt
G13A QUEENS PARK	12	11	0	1	29	1	28	0		34
G13A EASTS FC	12	10	1	1	53	6	47	0		31
G13B EASTS FC	12	6	6	0	23	26	-3	0		18
G13A OLYMPIC EAGLES FC	12	5	6	1	21	16	5	0		16
G13B MACCABI JUNIOR SC	12	4	8	0	12	37	-25	0		12
G13A PAGEWOOD BOTANY FC	12	3	7	2	9	23	-14	0		11
G13A MAROUBRA UNITED	12	0	11	1	6	44	-38	0		1



**G14/1**

TEAM	P	W	L	D	F	A	GD	Pts	Adj	Pt
G14A QUEENS PARK	14	12	1	1	33	2	31	0		37
G14A EASTS FC	14	9	3	2	30	13	17	0		29
G13A MACCABI JUNIOR SC	14	7	5	2	28	18	10	0		23
G14B EASTS FC	15	5	8	2	11	21	-10	0		17
G14B QUEENS PARK	13	4	8	1	14	25	-11	0		13
G14A MACCABI A	14	1	13	0	5	42	-37	0		3

**G14/2**

TEAM	P	W	L	D	F	A	GD	Pts	Adj	Pt
G14A COOGEE UNITED	14	13	0	1	75	4	71	0		40
G14A MAROUBRA UNITED	14	7	5	2	37	29	8	0		23
G14A OLYMPIC EAGLES FC	13	5	4	4	27	30	-3	0		19
G14A PAGEWOOD	13	3	5	5	22	26	-4	0		14
G14C QUEENS PARK	14	3	8	3	15	28	-13	0		12
G14B MACCABI B	14	2	11	1	9	68	-59	0		7

**G16/1**

TEAM	P	W	L	D	F	A	GD	Pts	Adj	Pt
G16A MACCABI	11	9	2	0	39	5	34	0		27
G16A MAROUBRA UNITED	10	7	2	1	34	11	23	0		22
G16A EASTS FC	10	5	4	1	22	13	9	0		16
G16A COOGEE UNITED	10	2	7	1	10	44	-34	0		7
G16A QUEENS PARK	11	1	9	1	9	41	-32	0		4

**G16/2**

TEAM	P	W	L	D	F	A	GD	Pts	Adj	Pt
G16 EMERALDS MAROUBRA UNITED	12	11	1	0	56	8	48	0		33
G16R REDDAM HOUSE	13	8	5	0	30	21	9	0		24
G16 DIAMONDS MAROUBRA UNITED	13	7	5	1	32	23	9	0		22
G16B MACCABI B	12	6	5	1	41	16	25	0		19
G16B EASTS FC	12	6	5	1	26	15	11	0		19
G16A PAGEWOOD BOTANY FC	7	2	4	1	8	13	-5	9		16
G16B QUEENS PARK	12	4	8	0	15	29	-14	0		12
G16C MACCABI JUNIOR SC	13	1	12	0	5	88	-83	0		3

## 2011 LEAGUE AND PREMIER WINNERS - WOMEN

DIVISION	LEAGUE CHAMPIONS	GRAND FINAL WINNER
AAW / AAW1	AAW1A DUNBAR ROVERS	AAW1A DUNBAR ROVERS
AAW / AAW2	AAW2 COOGEE UNITED	AAW2 COOGEE UNITED
AAW / AAW3	AAW3 QUEENS PARK FC	AAW3 QUEENS PARK FC
O35W / O35W	O35WR QUEENS PARK Rangers	O35WL QUEENS PARK Lions

### AAW/AAW1

TEAM	P	W	L	D	F	A	GD	Pts	Adj	Pt
AAW1L QUEENS PARK FC	17	14	2	1	60	23	37	0		43
AAW1A DUNBAR ROVERS	16	12	2	2	73	14	59	0		38
AAW1 WAVERLEY OLD BOYS	17	11	5	1	32	11	21	0		34
AAW1 GLEBE WANDERERS	17	6	10	1	28	51	-23	0		19

### AAW/AAW1B

TEAM	P	W	L	D	F	A	GD	Pts	Adj	Pt
AAW1 MAROUBRA UNITED	17	7	9	1	27	41	-14	0		22
AAW1 MARRICKVILLE	17	5	9	3	33	54	-21	0		18
AAW1 PAGEWOOD	17	4	10	3	35	51	-16	0		15
AAW1 UNSW FOOTBALL	16	1	13	2	14	57	-43	0		5

### AAW/AAW2

TEAM	P	W	L	D	F	A	GD	Pts	Adj	Pt
AAW2 COOGEE UNITED	17	13	1	3	54	14	40	0		42
AAW2 HEFFRON HAWKS	17	8	6	3	37	33	4	0		27
AAW2 MACCABI	17	8	7	2	50	36	14	0		26
AAW2 DUNBAR ROVERS	17	6	4	7	20	21	-1	0		25

### AAW/AAW2B

TEAM	P	W	L	D	F	A	GD	Pts	Adj	Pt
AAW2 LOKOMOTIV COVE FC	17	7	5	5	29	25	4	0		26
AAW2 MAROUBRA UNITED	17	6	9	2	14	20	-6	0		20
AAW2 WAVERLEY OLD BOYS	17	6	9	2	25	38	-13	0		20
AAW2 PAGEWOOD BOTANY FC	17	0	13	4	5	47	-42	0		4

**AAW/AAW3**

TEAM	P	W	L	D	F	A	GD	Pts	Adj	Pt
AAW3 QUEENS PARK FC	15	10	3	2	37	17	20	0		32
AAW3 MAROUBRA UNITED	15	8	3	4	28	13	15	0		28
AAW3 OLYMPIC EAGLES FC	15	8	4	3	19	14	5	0		27
AAW3 MASCOT KINGS	15	6	2	7	23	8	15	0		25

**AAW/AAW3B**

TEAM	P	W	L	D	F	A	GD	Pts	Adj	Pt
AAW3 LOKOMOTIV COVE FC	14	4	7	3	17	17	0	0		15
AAW3 UNSW FOOTBALL	14	3	9	2	16	32	-16	0		11
AAW3 PAGEWOOD BOTANY FC	14	1	12	1	5	44	-39	0		4

**O35W/1**

TEAM	P	W	L	D	F	A	GD	Pts	Adj	Pt
O35WR QUEENS PARK Rangers	16	12	2	2	37	10	27	0		38
O35W GLEBE WANDERERS	16	11	2	3	46	14	32	0		36
O35WL QUEENS PARK Lions	16	10	5	1	43	12	31	0		31
O35W MAROUBRA UNITED	16	2	13	1	12	60	-48	0		7
O35W MACCABI	16	1	14	1	8	50	-42	0		4

## 2011 LEAGUE AND PREMIER WINNERS - MENS

DIVISION	LEAGUE CHAMPIONS	GRAND FINAL WINNER
PL / PL	PL DUNBAR ROVERS	PL DUNBAR ROVERS
PL / PLR	PLR WAVERLEY OLD BOYS	PLR DUNBAR ROVERS
AA / AA1	AA1 BARNSTONEWORTH	AA1 BARNSTONEWORTH
AA / AA2	AA2 BONDI UNITED	AA2 COOGEE UNITED
AA / AA3	AA3 PAGEWOOD	AA3 LOKOMOTIV COVE FC
AA / AA4	AA4 WAVERLEY OLD BOYS	AA4 WAVERLEY OLD BOYS
AA / AA5	AA5 SYDNEY UNIVERSITY	AA5 SYDNEY UNIVERSITY
AA / AA6	AA6A LOKOMOTIV COVE FC	AA6B LOKOMOTIV COVE FC
AA / AA7	AA7 MAROUBRA UNITED	AA7 COOGEE UNITED
AA / AA8	AA8 MAROUBRA UNITED	AA8 REDFERN RAIDERS
AA / AA9	AA9 QUEENS PARK FC	AA9 QUEENS PARK FC
AA / AA10	AA10 WAVERLEY OLD BOYS	AA10 WAVERLEY OLD BOYS
O35 / O35	O351 PAGEWOOD	O351 PAGEWOOD
O35 / O352	O35 REDFERN RAIDERS	O35A PAGEWOOD BOTANY FC
O45 / O45	O45 DUNBAR ROVERS	O45 DUNBAR ROVERS

**PL/First Grade**

TEAM	P	W	L	D	F	A	GD	Pts	Adj	Pt
PL DUNBAR ROVERS	18	12	3	3	62	20	42	0		39
PL WAVERLEY OLD BOYS	18	10	5	3	41	33	8	0		33
PL GLEBE WANDERERS	18	9	5	4	45	27	18	0		31
PL PHOENIX	18	8	6	4	35	24	11	0		28
PL MAROUBRA UNITED	18	7	6	5	40	32	8	0		26
PL PAGEWOOD	18	7	7	4	28	30	-2	0		25
PL COOGEE UNITED	18	7	8	3	30	34	-4	0		24
PL LOKOMOTIV COVE FC	18	5	9	4	27	47	-20	0		19
PL MASCOT KINGS	18	5	10	3	24	41	-17	0		18
PL SYDNEY UNIVERSITY	18	2	13	3	22	66	-44	0		9

**PL/First Grade**

TEAM	P	W	L	D	F	A	GD	Pts	Adj	Pt
PLR WAVERLEY OLD BOYS	18	15	3	0	45	17	28	0		45
PLR DUNBAR ROVERS	18	12	0	6	49	12	37	0		42
PLR COOGEE UNITED	18	11	3	4	33	18	15	0		37
PLR GLEBE WANDERERS	18	9	4	5	34	14	20	0		32
PLR MAROUBRA UNITED	18	9	7	2	42	28	14	0		29
PLR LOKOMOTIV COVE FC	18	7	9	2	26	33	-7	0		23
PLR PAGEWOOD	18	5	11	2	18	45	-27	0		17
PLR PHOENIX	18	4	12	2	19	44	-25	0		14
PLR SYDNEY UNIVERSITY	18	3	13	2	29	42	-13	0		11
PLR MASCOT KINGS	18	2	15	1	13	55	-42	0		7

**AA/All Age 1**

TEAM	P	W	L	D	F	A	GD	Pts	Adj	Pt
AA1 BARNSTONEWORTH	18	11	5	2	40	25	15	0		35
AA1 SYDNEY UNIVERSITY	18	10	7	1	31	29	2	0		31
AA1 MACCABI HAKOAH	18	9	7	2	47	33	14	0		29
AA1 LOKOMOTIV COVE FC	18	9	7	2	31	25	6	0		29
AA1L QUEENS PARK LIONS	18	8	6	4	37	29	8	0		28
AA1 OLYMPIC EAGLES FC	18	9	8	1	36	28	8	0		28
AA1 DUNBAR ROVERS	16	5	5	6	22	22	0	0		21
AA1 UNSW	17	4	7	6	21	37	-16	0		18
AA1B DUNBAR ROVERS	18	4	10	4	26	44	-18	0		16
AA1 WAVERLEY OLD BOYS	17	2	9	6	27	46	-19	0		12

**AA/All Age 2**

TEAM	P	W	L	D	F	A	GD	Pts	Adj	Pt
AA2 BONDI UNITED	18	13	3	2	54	26	28	0		41
AA2 COOGEE UNITED	18	13	4	1	65	25	40	0		40
AA2 MAROUBRA UNITED	18	11	6	1	48	34	14	0		34
AA2 REDFERN RAIDERS	18	10	5	3	45	37	8	0		33
AA2 LOKOMOTIV COVE FC	18	8	9	1	30	43	-13	0		25
AA2 GLEBE WANDERERS	18	6	8	4	32	40	-8	0		22
AA2 BARNSTONEWORTH UNITED	17	5	10	2	28	31	-3	0		17
AA2 SYDNEY UNIVERSITY	17	5	10	2	21	43	-22	0		17
AA2 QUEENS PARK	16	4	11	1	18	34	-16	0		13
AA2 MACCABI HAKOAH	14	1	10	3	14	42	-28	0		6

**AA/All Age 3**

TEAM	P	W	L	D	F	A	GD	Pts	Adj	Pt
AA3 PAGEWOOD	15	12	0	3	47	13	34	0		39
AA3 LOKOMOTIV COVE FC	16	10	3	3	39	14	25	0		33
AA3 MACCABI SENIORS	16	9	4	3	48	30	18	0		30
AA3 COOGEE UNITED	16	9	5	2	42	27	15	0		29
AA3 DUNBAR ROVERS	17	10	6	1	34	42	-8	0		28
AA3 QUEENS PARK	16	7	8	1	28	24	4	0		22
AA3 SYDNEY UNIVERSITY	15	2	11	2	11	39	-28	0		8
AA3 UNSW	16	2	12	2	14	45	-31	0		8
AA3 MASCOT KINGS	16	1	12	3	9	38	-29	0		6

**AA/All Age 4**

TEAM	P	W	L	D	F	A	GD	Pts	Adj	Pt
AA4 WAVERLEY OLD BOYS	18	13	3	2	55	21	34	0		41
AA4 LIONS FC	18	11	3	4	48	26	22	0		37
AA4 DUNBAR ROVERS	18	11	6	1	54	33	21	0		34
AA4 BARNSTONEWORTH	18	9	5	4	36	30	6	0		31
AA4 MACCABI HAKOAH	18	9	7	2	50	35	15	0		29
AA4A LOKOMOTIV COVE FC	17	7	8	2	38	41	-3	0		23
AA4 QUEENS PARK	18	5	11	2	35	56	-21	0		17
AA4B LOKOMOTIV COVE FC	18	5	11	2	22	49	-27	0		17
AA4 REDFERN RAIDERS	18	3	11	4	30	61	-31	0		13
AA4 SYDNEY UNIVERSITY	17	2	10	5	22	38	-16	0		11

**AA/All Age 5**

TEAM	P	W	L	D	F	A	GD	Pts	Adj	Pt
AA5 SYDNEY UNIVERSITY	18	15	1	2	60	21	39	0		47
AA5 MAROUBRA UNITED	18	12	4	2	37	18	19	0		38
AA5 LOKOMOTIV COVE FC	18	11	6	1	52	33	19	0		34
AA5 DUNBAR ROVERS	18	10	6	2	40	26	14	0		32
AA5 COOGEE UNITED	18	10	6	2	45	32	13	0		32
AA5L QUEENS PARK LIONS	18	6	7	5	35	28	7	0		23
AA5R QUEENS PARK RANGERS	17	7	9	1	37	34	3	0		22
AA5 WAVERLEY OLD BOYS	18	4	11	3	22	40	-18	0		15
AA5 EASTS FC	16	2	13	1	16	72	-56	0		7
AA5 HEFFRON HAWKS	17	0	14	3	18	58	-40	0		3

**AA/All Age 6**

TEAM	P	W	L	D	F	A	GD	Pts	Adj	Pt
AA6A LOKOMOTIV COVE FC	18	12	6	0	49	20	29	0		36
AA6 DUNBAR ROVERS	18	10	4	4	66	18	48	0		34
AA6 QUEENS PARK	18	10	4	4	39	26	13	0		34
AA6B LOKOMOTIV COVE FC	18	10	6	2	41	29	12	0		32
AA6 COOGEE UNITED	18	8	5	5	28	20	8	0		29
AA6 MAROUBRA UNITED	18	7	9	2	31	45	-14	0		23
AA6B SYDNEY UNIVERSITY	18	6	9	3	38	42	-4	0		21
AA6A SYDNEY UNIVERSITY	17	5	7	5	26	33	-7	0		20
AA6 KYTHERIANS	17	3	11	3	12	55	-43	0		12
AA6 PAGEWOOD	18	3	13	2	20	62	-42	0		11

**AA/All Age 7**

TEAM	P	W	L	D	F	A	GD	Pts	Adj	Pt
AA7 MAROUBRA UNITED	18	10	2	6	34	16	18	0		36
AA7 QUEENS PARK	18	10	5	3	37	23	14	0		33
AA7 SYDNEY UNIVERSITY	17	8	4	5	36	26	10	0		29
AA7 COOGEE UNITED	18	9	7	2	37	28	9	0		29
AA7 REDFERN RAIDERS	18	8	7	3	27	28	-1	0		27
AA7 LIONS	18	7	6	5	27	18	9	0		26
AA7 UNSW FOOTBALL	18	5	7	6	32	38	-6	0		21
AA7 LOKOMOTIV COVE FC	17	6	8	3	32	39	-7	0		21
AA7 DUNBAR ROVERS	17	3	10	4	18	31	-13	0		13
AA7N OLYMPIC EAGLES FC	17	3	13	1	17	45	-28	0		10



**AA/All Age 8**

TEAM	P	W	L	D	F	A	GD	Pts	Adj	Pt
AA8 MAROUBRA UNITED	18	13	1	4	63	21	42	0		43
AA8 REDFERN RAIDERS	18	11	4	3	48	30	18	0		36
AA8 DUNBAR ROVERS	18	10	4	4	60	29	31	0		34
AA8 BARNSTONEWORTH UNITED	18	9	4	5	50	32	18	0		32
AA8 LOKOMOTIV COVE FC	18	9	6	3	34	30	4	0		30
AA8 COOGEE UNITED	17	8	5	4	46	27	19	0		28
AA8 UNSW FOOTBALL	18	6	8	4	51	59	-8	0		22
AA8 MACCABI HAKOAH	17	2	11	4	17	33	-16	0		10
AA8 PAGEWOOD BOTANY FC	17	2	12	3	25	53	-28	0		9
AA8 SYDNEY UNIVERSITY	17	0	15	2	14	94	-80	0		2

**AA/All Age 9**

TEAM	P	W	L	D	F	A	GD	Pts	Adj	Pt
AA9 QUEENS PARK FC	18	12	4	2	55	22	33	0		38
AA9 WAVERLEY OLD BOYS	18	12	5	1	49	30	19	0		37
AA9A COOGEE UNITED	18	11	4	3	52	28	24	0		36
AA9 EASTS FC	18	10	5	3	45	20	25	0		33
AA9 HEFFRON HAWKS	18	9	6	3	44	32	12	0		30
AA9 LIONS FC	18	8	5	5	40	29	11	0		29
AA9B COOGEE UNITED	18	8	8	2	47	41	6	0		26
AA9 LOKOMOTIV COVE FC	17	4	11	2	15	40	-25	0		14
AA9 UNSW	18	4	13	1	24	57	-33	0		13
AA9 REDFERN RAIDERS	17	0	17	0	6	78	-72	0		0

**AA/All Age 9**

TEAM	P	W	L	D	F	A	GD	Pts	Adj	Pt
AA10 WAVERLEY OLD BOYS	16	11	2	3	60	13	47	0		36
AA10 LOKOMOTIV COVE FC	15	8	5	2	41	32	9	0		26
AA10 EASTS FC	15	8	5	2	41	33	8	0		26
AA10N OLYMPIC EAGLES FC	15	6	7	2	35	44	-9	0		20
AA10 QUEENS PARK	15	5	7	3	35	44	-9	0		18
AA10A PAGEWOOD BOTANY FC	16	4	9	3	34	51	-17	0		15
AA10 SYDNEY UNIVERSITY	15	3	11	1	23	57	-34	0		10

**035/Over 35 Div 1**

TEAM	P	W	L	D	F	A	GD	Pts	Adj	Pt
O351 PAGEDWOOD	13	10	2	1	39	12	27	0		31
O35A DUNBAR ROVERS	13	9	1	3	35	12	23	0		30
O351 MACCABI SENIORS	14	7	6	1	27	23	4	0		22
O35 MASCOT KINGS	14	6	7	1	25	32	-7	0		19
O35 HEFFRON HAWKS	13	5	6	2	21	27	-6	0		17
O35A COOGEE UNITED	14	5	8	1	22	29	-7	0		16
O35B DUNBAR ROVERS	13	0	12	1	10	44	-34	0		1

**035/Over 35 Div 2**

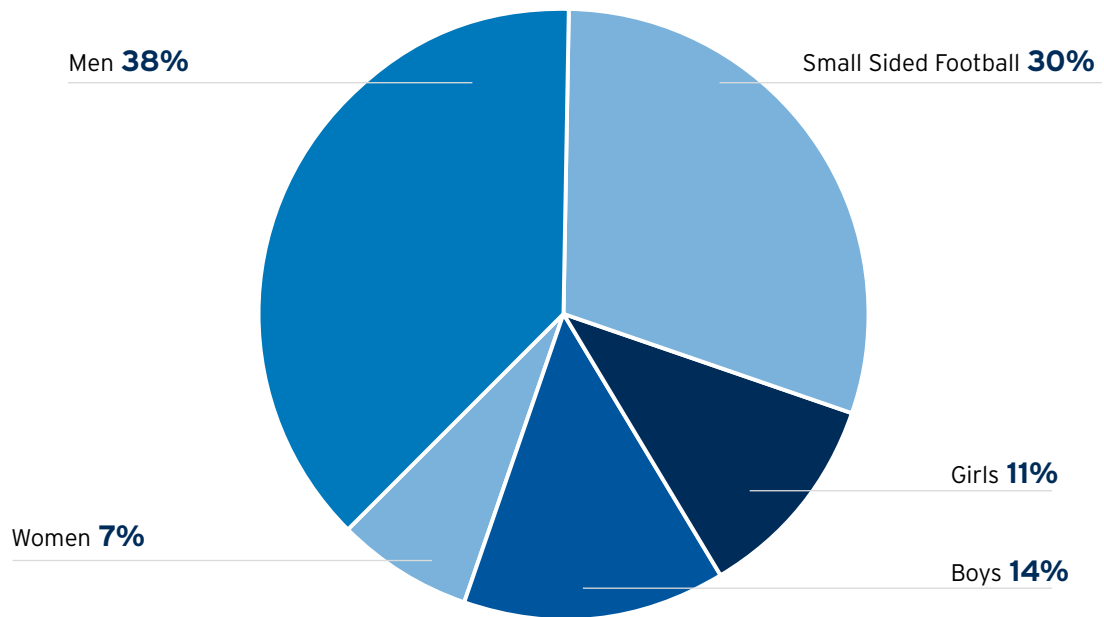
TEAM	P	W	L	D	F	A	GD	Pts	Adj	Pt
O35 REDFERN RAIDERS	16	14	1	1	58	7	51	0		43
O35R QUEENS PARK FC	15	12	2	1	48	12	36	0		37
O35A PAGEDWOOD BOTANY FC	16	10	4	2	54	18	36	0		32
O35 LOKOMOTIV COVE FC	16	5	5	6	35	33	2	0		21
O352 MACCABI SENIORS	16	5	7	4	25	35	-10	0		19
O35B COOGEE UNITED	16	5	8	3	32	52	-20	0		18
O35B PAGEDWOOD BOTANY FC	15	2	8	5	22	36	-14	0		11
O35 MAROUBRA UNITED	16	2	10	4	11	49	-38	0		10
O35L QUEENS PARK FC	16	1	11	4	22	65	-43	0		7

**045/Over 45 Div 1**

TEAM	P	W	L	D	F	A	GD	Pts	Adj	Pt
O45 DUNBAR ROVERS	19	17	1	1	97	18	79	0		52
O45A MAROUBRA UNITED	20	14	5	1	60	31	29	0		43
O45 BONDI UNITED	18	11	4	3	52	36	16	0		36
O45 REDFERN RAIDERS	20	8	10	2	34	43	-9	0		26
O45 QUEENS PARK FC	18	2	15	1	13	62	-49	0		7
O45B MAROUBRA UNITED	19	0	17	2	13	79	-66	0		2

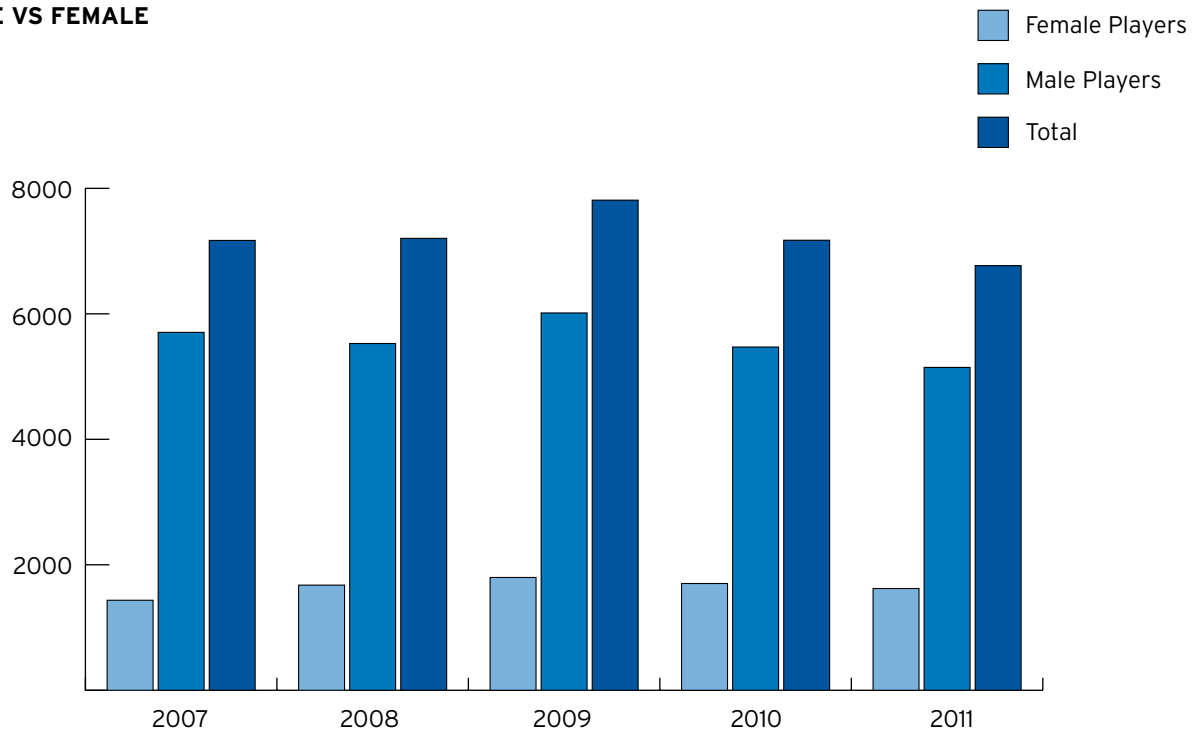
## ASSOCIATION STATISTICS

### JUNIORS V SENIORS 2011



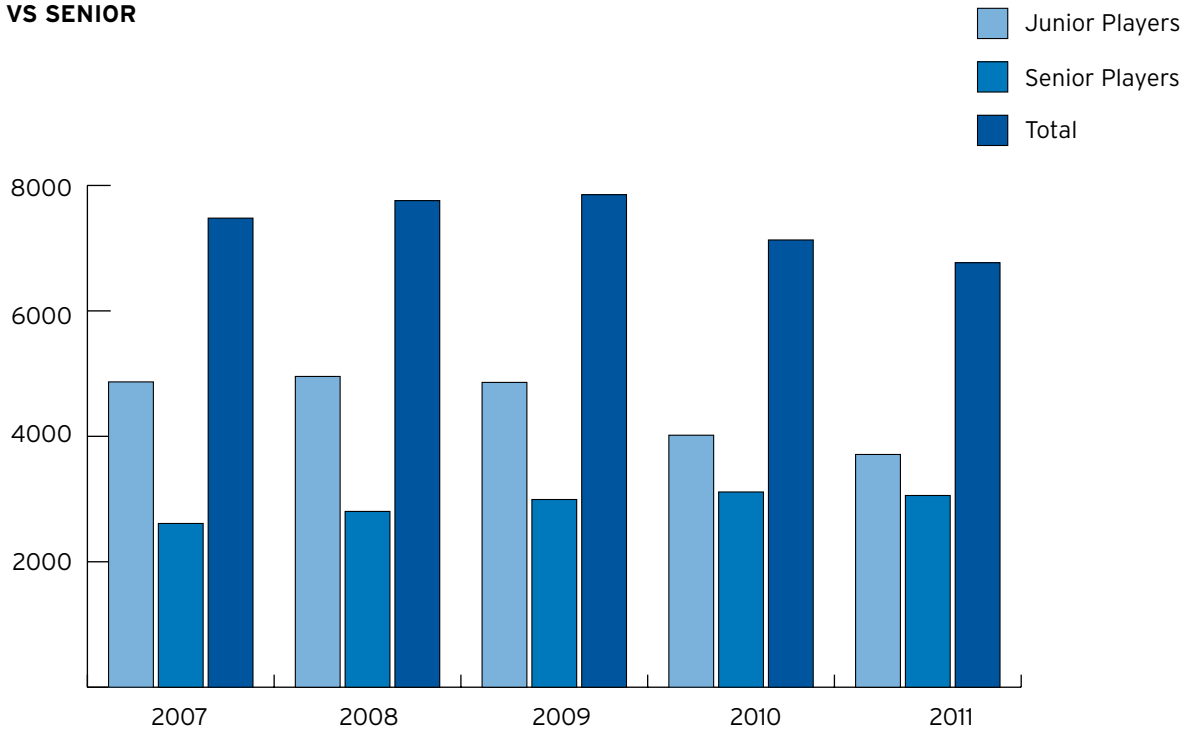
## PLAYER STATISTICS

### MALE VS FEMALE

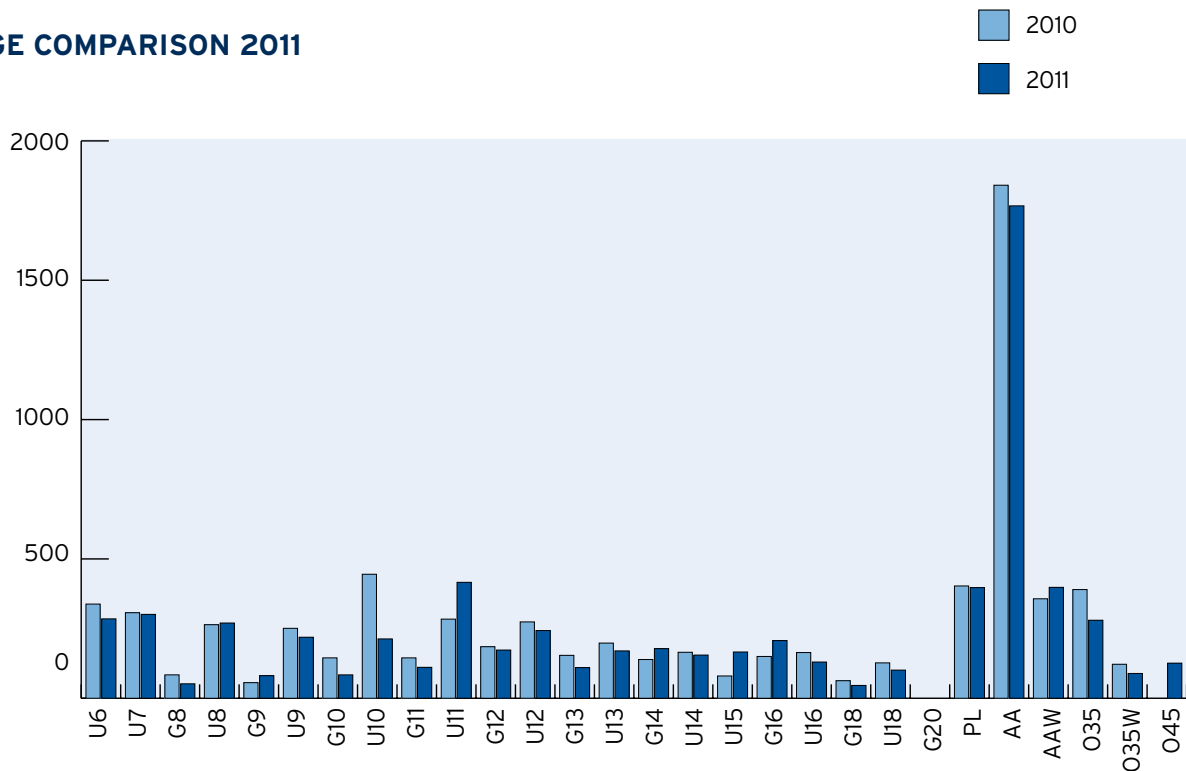


## PLAYER STATISTICS

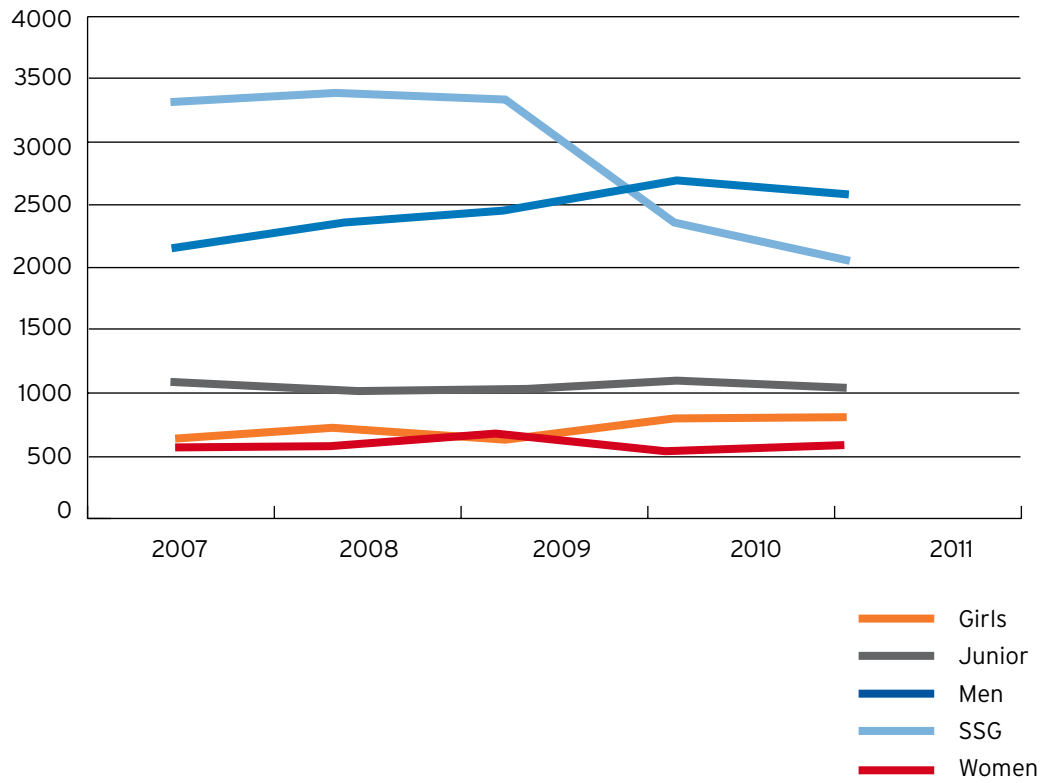
### JUNIOR VS SENIOR



### AGE COMPARISON 2011



## PARTICIPANTS





**EASTERN SUBURBS  
FOOTBALL ASSOCIATION**

The Board and staff of the Eastern Suburbs Football Association wish to thank our valuable partners for their support in developing the world game in the Eastern Suburbs.

---

**Principal Partner:**

**JAZZRIGHT**  
PRODUCTION SERVICES

---

**Major Partners:**



---

**Premium Partners:**



---

**Special Thanks:**

Coogee Diggers RSL, Cooke Design, Juniors @ The Junction, Kanga Sports, Klem's Engraving, Randwick City Council, Centennial Park and Moore Park Trust, City of Botany Bay Council, Municipality of Woollahra, Waverley Municipal Council and the City of Sydney.

**Photo contributors:**

Gregory Calacouris, Aaron Dibdin, Grahame Edwards, Sue Fenton, Adam Giles, Eleanor Godley, David Iacono, Brendin Lo, Robert Pachon, Rob Robinson, Marion Romeo, David Webber.